

eurobib[®]

direct



Everything your library needs!

www.wearibrarypeople.com



ALWAYS NEW, EXCITING AND JUST AS SURPRISING

Welcome to our new catalogue. We are pleased to present our exciting new products and a new graphic layout. We have redesigned the catalogue so that you can find furniture and matching accessories in the same place.

The catalogue interacts with our new website, where you will find further information, more smart tips and customer references. You can obviously also search on our entire product range on the website, from configured furniture that can be adapted to your library's wishes to furniture and accessories from the catalogue, and where everything can be delivered together.

If you are looking for information to design the interior of your library, you can go on a voyage of discovery among our references from all parts of the world. Contact our sales and interior design advisers!

In our new catalogue you will once again find many solutions developed for younger users. We hope you will want to discover ways of creating activity-promoting and learning environments using our solutions.

Environments that can encourage various practical, creative forms of expression with the focus on curiosity and, above all, a desire to read. All adapted on the basis of the library's own assets and resources so that you can install quickly and easily and get started time and time again.

This and much more besides!

KEEP AN EYE ON THESE SYMBOLS IN THE CATALOGUE



The environment symbol describes the products with reference to the materials, their properties and environmental conditions or any other relevant information that may be worth knowing.



The information symbol shows where to go for further information and inspiration in webshop.



The Owl conveys tips and advice that you may find useful, including care instructions and facts you should pay attention to.



3

Display & Signage

- Display Stands
- Presentation Stands
- Display Lists and Boxes
- Wall and End Panel Displays
- Magnetic Frames
- Symbol Signage



21

Display & Storage Furniture

- Podiums
- Display Furniture
- Storage Furniture
- Media Towers
- Whiteboards



39

Browsers

- Picture Book Browsers
- AV Browsers



51

Book Trolleys & Return Cabinets

- Single-sided Book Trolleys
- Double-sided Book Trolleys
- Return Cabinets



63

Furniture for Learning Environments

- Children's Furniture,
- Makerspace, Room in a Room,
- Coat Hangers,
- Stools, Chairs and Cushions
- Sound Chair, Gaming Unit



79

Work & Search Stations

- Work Stations
- Search Stations
- Counters
- Tablet Holders



89

Shelving Systems & Accessories

- Wooden, Steel and Melamine coated Shelvings
- Book Supports
- Index Blocks & Block Labels
- Shelf Marking



105

Book Care

- Book Foil
- Covers & Pockets
- Book Repair Tape
- Label Protection

Take an extra close look at some of our exciting new products!

How about the modular system Memphis? Invite visitors to take a walk past buildings with "display windows" filled with books, magazines, and much more besides! See pages 22-23.

Or what about Reading Hut? A multifunctional reading room for children with built-in shelves in the shape of African hut – surprising is the word! See page 69.

Add a new collection of display racks with a seasonal theme! Make sure you invite your visitors to special occasions. See page 20.

PRICES AND TERMS

For prices and sales and delivery terms please contact your local dealer or Export Manager Kjell Granelli on kjell.granelli@bci.dk or phone +46 70 976 98 31

DELIVERY

Orders made before 12 noon are normally processed the same day. The vast majority of items are in stock for immediate delivery, while some are non-stock items. So check the delivery time for a particular item in the webshop.

SUBJECT TO CHANGE DISCLAIMER

Lammhults Biblioteksdesign reserves the right to change the conditions in the catalogue with regard to product availability, design, specifications and price. Errors and omissions excepted.

WARRANTY

We provide a 2-year product warranty for defects in materials and manufacturing errors.

REGISTERED OFFICE

Lammhults Biblioteksdesign AB
Odlarevägen 16, Box 150
SE-221 00 Lund
Sweden
Tel: +46 46 31 18 00
Fax: +46 46 32 05 29

Org. no.: SE5560038885101
Danske Bank Sweden Branch
Plusgiro: 25 60 65-4
Bankgiro: 996-1111
Swift code: DAASESX
IBAN no.:
E861200000012131450273

OUR WEBSHOPS

The Eurobib Direct range is sold through our webshops in Sweden, Norway, Denmark, UK, Belgium, France, Germany and Holland. In case there is no webshop in your country please contact us on export@wearelibrarypeople.com

The catalogue is, of course, printed on environmentally and FSC-certified paper.



Lammhults Biblioteksdesign AB is certified according to ISO 14001 and ISO 9001. We keep our promises!

Go to the back of the catalogue for an alphabetic product index



AUTUMN COLLECTION

- More natural and sustainable materials

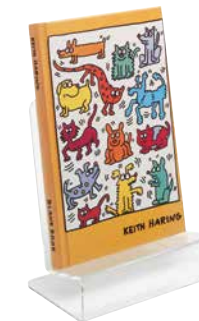
In Autumn we will update some of our bestselling book trolleys in new veneers. Choose between fresh-looking book trolleys in birch veneer or exclusive-looking book trolleys in oak veneer.

wearelibrarypeople.com/book-trolleys



DISPLAY & SIGNAGE

WE ARE LIBRARY PEOPLE®





Frogner Public Library, Norway

CREATING MAGIC IN THE LIBRARY

We can't pull a rabbit out of our hat, but we can get a rabbit to capture your visitors' attention in the most magical way. We would love to tell you more about this.

What could be better than getting words of wisdom from someone who knows? Meet Ragnhild Malfang, Library Manager in Sørnum Municipality, north of Lillestrøm, Norway.

"It was a matter of making space for a variety of ideas and set-ups, adapted to our new and more open library."

According to Ragnhild, you have to think about what the various activities and visitors require, so it must be both easy to work with and easy to modify. You also have to cater to those who want to feel taken care of and welcome – perhaps in a pleasurable way like this.



E3372/E3374



E3393

Grab the attention of your visitors

As decorative as they are useful. Create focus and relevance for the user. We're talking about inspiring elements that spark curiosity and a desire to read!

MEET OWL AND ALL HIS FRIENDS

Display stands for books and other medias.
Can be used both freestanding and wall-mounted. All with keyhole attachments.



Lion & Lioness

Rrrroar...

A display stand for people who can't wait to get their claws into books. Can be used both free-standing and wall-mounted.

Size	Lion: W299 x D127 x H347 mm Display depth: 56 mm Lioness: W288 x D127 x H285 mm Display depth: 56 mm
Material	Powdercoated steel
Design	Louise Hederström & Dan Jonsson for Eurobib Direct

E3394 Lion
E3395 Lioness



Frog

Magical moments

Kiss the frog and meet your fairytale prince (or princess for that matter). Decorative for both fairytale books and books about amphibians and other reptiles. Can be used both freestanding and wall-mounted.

Size	W229 x D127 x H311 mm Display depth: 56 mm
Material	Powdercoated steel
Design	Louise Hederström & Dan Jonsson for Eurobib Direct

E3502



Meet the designer
wearelibrarypeople.com/louisehederstrom



Rabbit

Magic rabbit display

A decorative display. Can be used both free-standing and wall-mounted.

Size	W160 x D127 x H342 mm Display depth: 56 mm
Material	Powdercoated steel
Design	Louise Hederström & Dan Jonsson for Eurobib Direct

E3392



Chicken

Book! Book!

Our chickens have hatched – a decorative display that invites visitors to pick up a book. Can be used both freestanding and wall-mounted.

Size	W256 x D143 x H323 mm Display depth: 56 mm
Material	Powdercoated steel
Design	Louise Hederström & Dan Jonsson for Eurobib Direct

E3501

Did you hear the story about
"The Chicken and the Frog"?
You can find it online.



Owl

The popular display stand

Display stands and rails to grab your visitors' attention. Can be used both freestanding and wall-mounted.

Size	S: W117 x D92 x H191 mm Display depth: 25 mm M: W199 x D127 x H311 mm Display depth: 43 mm L: W234 x D137 x H369 mm Display depth: 55 mm
Material	Powdercoated steel
Design	Louise Hederström & Dan Jonsson for Eurobib Direct

E3371 S, red
E3372 S, white
E3373 M, red
E3374 M, white
E3375 L, red
E3376 L, white



Wolf

The big bad wolf display

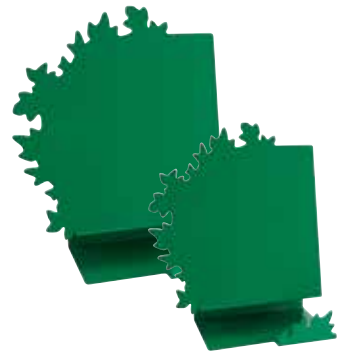
A display for visitors who want to sink their teeth into a deliciously scary and exciting book. Can be used both freestanding and wall-mounted.

Size	W160 x D127 x H342 mm Display depth: 56 mm
Material	Powdercoated steel
Design	Louise Hederström & Dan Jonsson for Eurobib Direct

E3393

METAL DISPLAY STANDS

Stands that are as decorative as they are useful.



Leaf

Nature display stand
Can be used both freestanding and wall-mounted.

Size	S: W166 x D101 x H266 mm Display depth: 25 mm L: W256 x D127 x H206 mm Display depth: 55 mm
Material	Powdercoated steel
Design	Louise Hederström for Eurobib Direct

E3384	S
E3386	L

Fishy is also available as book support, coat hanger or wall display in a XL format, see page 13.

E3399	book support
E3400	coat hanger
E3402	wall display XL



Fishy

Sturdy book support. Ideal for books that are a little larger in size. Only freestanding.

Size	W168 x D125 x H262 mm Display depth: 60 mm
Material	Powdercoated steel
Design	Bjarne Hjertvik for Eurobib Direct
Motif	Freely based on an illustration by Yves Guillou

E3398



E3399

E3400



Spiky

Foster an interest in reading
Fun display stand in the form of a cactus for front display of books in a slightly larger size.

Size	W215 x D200 x H287 mm Display depth: 67 mm
Material	Powdercoated steel wire
Design	Bjarne Hjertvik for Eurobib Direct

E3388



Twigs

On the green branch
Twigs display stand - for displaying larger volumes. Only freestanding.

Size	W226 x D110 x H246 mm Display depth: 88 mm
Material	Powdercoated steel
Design	Louise Hederström for Eurobib Direct

E3818

ACRYLIC DISPLAY STANDS

User-friendly stands that are easy to find a home for. All with their own unique style.



Exclamation Mark

Arouse curiosity
An attractive opac acrylic stand with high finish. The stand is ideal for creating a focus point and for giving the books an attractive framing.

Size	W210 x D130 x H200 mm Display depth: 40 mm
Material	Dyed/clear acrylic, PMMA
Design	Franz James for Eurobib Direct

E3565	white, dyed
E3566	black, dyed
E3567	bourdeaux, dyed
E3568	clear



E3565



Kaxig

Multifunctional display
Amazing display holder for a book or tablet! The transparent acrylic makes it possible to read all the text even though placed into the holder, no matter if it is a book or an iPad.

Size	L: W169 x D140 x H140 mm Display depth: 58 mm S: W117 x D100 x H100 mm Display depth: 41 mm
Material	Clear acrylic, PMMA
Design	Franz James for Eurobib Direct

E3571	L
E3572	S



E3571 / E3572



Swing

Colourful display stand with inbuilt function that rocks when you touch it. Suitable for both books and audiovisual titles.

Capacity	1-2 standard books
Size	W120 x D200 x H165 mm Display depth: 75 mm
Material	Clear acrylic, PMMA
Design	Franz James for Eurobib Direct

E3561	orange
E3562	green



E3561



Bjarne Hjertvik has been our "in-house designer" for many years now and has designed some of our most popular collections. You haven't missed them, have you?

Meet the designer
wearelibrarypeople.com/bjarnehjertvik



Our range of display stands is both broad and deep. Keep your eyes peeled, we add new ones all the time.

More information on
wearelibrarypeople.com/display



SINGLE-SIDED DISPLAY STANDS

Face books and other media towards the visitors!



Media stand, 3 tiers

Freestanding, single-sided, 3-tier stand for forward-facing display of books. The generous shelf depth allows for up to two books on each tier.

Capacity	S: 3-6 standard books L: 9-18 standard books
Size	W200/600 x D340 x H465 mm Display depth: 70 mm
Material	Clear acrylic, PMMA, lacquered metal tube

E6710	S, W200 mm
E6711	L, W600 mm



Stackable Book Stand, low

All-round, stackable stands in a range of widths and heights and in clear or blue acrylic finish.

Size	S: W80 x D180 x H125 mm M: W300 x D180 x H130 mm L: W7200 x D180 x H130 mm
Material	Clear acrylic, PMMA

E3418	S, clear
E3408	S, blue
E3425	M, clear
E3420	L, clear

Stackable Book Stand, high

All-round, stackable stands in a range of widths and heights and in clear or blue acrylic finish.

Size	S: W200 x D185 x H260 mm M: W400 x D185 x H260 mm L: W700 x D185 x H260 mm
Material	Clear acrylic, PMMA

E3432	S, clear
E3465	S, blue
E3435	M, clear
E3423	L, clear

Acrylic stands are supplied with a protective film. Remove before use.



E3442

E3424

Book Stand

Stackable stand in white.

Size	W110 x D110 x H130 mm
Material	Dyed acrylic, PMMA

E0452

Linnea & Anneli

Our most popular and versatile stands ever.

Size	Linnea: W80 x D90 x H120 mm Anneli: W80 x D115 x H200 mm
Material	Clear acrylic, PMMA

E3424	Linnea
E3442	Anneli



E3418



E3435



E3424

DOUBLE-SIDED DISPLAY STANDS

Double-sided display stands with good capacity for presentation from two directions.



Wave

Double-sided display stand in a high quality glass look.

Capacity	4-8 standard books
Size	W430 x D3000 x H237 mm
Material	Clear acrylic, PMMA
Design	Franz James for Eurobib Direct

E6764

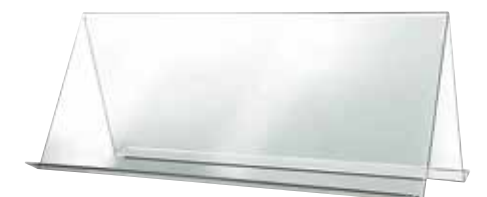


Tiered stand

2-tiered display stand with high capacity.

Capacity	S: 4 standard books L: 8 standard books
Size	S: W320 x D350 x H290 mm L: W700 x D350 x H290 mm
Material	Clear acrylic, PMMA

E3412	S
E3436	L



Double-sided stand

Stand for displaying material on both sides. High capacity.

Capacity	3-6 picture books
Size	W710 x D350 x H290 mm
Material	Clear acrylic, PMMA

E3429



E3429



E3576

Small touches, huge difference!

“With some small touches here and there, you can give your bookshelves a new look. Why not make use of the ‘cavities’ by putting a few display stands on the shelf? Naturally, we want the book to be the star, but even empty display stands can make the bookshelves stand out and become eye-catching. Display stands can also be used in other places, like on counters, podiums, and window sills.

There are many uses that go beyond just being decorative. They can be used to display an open book about nature, make brochures visible and easy to reach, or encourage visitors to help keep things tidy in study areas. Simple advice is good advice. It’s not about making changes. It’s more a matter of supplementing through small touches here and there.”

Tanja Fändrich, Interior Designer



E3392 / E3393



E50326



E82390

DISPLAY SOLUTIONS IN ALL SHAPES AND SIZES

Storage & display boxes, presentation stands, brochure stands, and much, much more.



Book Cradle

A handy cradle to store, move and display books and other media. Exclusive and eye-catching thanks to the thickness of the acrylic and the high finish. Ideal also for students who wish to bring selected reference books to a study place. Easy to assemble, thanks to the intelligent plug-in system.

Size	W310 x D250 x H190 mm
Material	Clear acrylic, PMMA
Design	Franz James for Eurobib Direct

E3576



Astrid

Display for open books.

Size	A4: W438 x D305 x H155 mm A5: W320 x D220 x H113 mm
Material	Clear acrylic, PMMA
Unit	2 pcs

E82390
E82391



Display Box

Smart boxes with high back that allows for browsing. Vertical A4 format.

Size	A4: W220 x D300 x H160/200 mm A5: W168 x D258 x H101/154 mm
Material	Clear acrylic, PMMA

E50336 A4
E50337 A5



E3417 + E341710

Åke

Sturdy, tiered stand with 4 compartments.

Size	W320 x D175 x H270 mm
Material	Clear acrylic, PMMA

E3415 orange
E3416 blue
E3417 clear

Accessories for Åke

E341710 Sign holder



Marit

Stand in sturdy, transparent acrylic. As simple as it is ingenious.

Size	S: W270 x D270 x H270 mm L: W300 x D300 x H300 mm
Material	Clear acrylic, PMMA
Unit	2 pcs

E82392



Show-off

Show open books
Understated open book display stand for standard or folio-sized books. Can be used as a standalone unit on tables, information desks or in display windows.

Size	W300 x D200 x H 280 mm Display depth: 43 mm
Material	Clear acrylic, PMMA

E3390



More display solutions on wearelibrarypeople.com/display



E7688



E7698

You(r)tube

Functional display and storage for brochures and other printed material. Place on wall or end panel with integrated key hole mounting.

Size	W600 x Ø80 mm Slits: W500 x D50 mm
Material	Powdercoated steel
Design	Bjarne Hjertvik for Eurobib Direct

E7688

Slitz

Functional and efficient display of magazines, brochures or other printed media. Wall hung or placed on end panels. Hang single or multiple together.

Size	W300 x D90 x H120 mm Slits: W260 x D560 mm
Material	Powdercoated steel
Design	Bjarne Hjertvik for Eurobib Direct

E7688



E0254



E0252

Wall hung display holders

Holders for face-forward display of magazines, brochures, etc. Place on end panels, wall or column.

Size	2-compartment: W480 x D55 x H625 mm 4-compartment: W480 x D55 x H1230 mm Display depth: 45 mm
Material	Clear acrylic, PMMA

E0252 2-compartment
E0254 4-compartment

WALL DISPLAYS

Wall displays that are as decorative as they are useful.

Fishy

Wall display XL
Cheeky design for front display of, for example, adventure, fantasy, and horror books for children & adolescents.

Size	W1160 x D90 x H395 mm Display depth: 52 mm
Material	Powdercoated steel
Design	Bjarne Hjertvik for Eurobib Direct
Motif	Freely based on an illustration by Yves Guillou

E3402



Clippy

A true page keeper
Wall-mounted display holder in the form of a paper clip for front display of books in a slightly larger size.

Size	W134 x D70 x H300 mm Display depth: 65 mm
Material	Powdercoated steel wire
Design	Bjarne Hjertvik for Eurobib Direct

E3396 white
E3397 black



Peeky

Arouse curiosity
Wall-mounted display holder in the form of a keyhole for front display of books in a slightly larger size.

Size	W155 x D75 x H300 mm Display depth: 65 mm
Material	Powdercoated steel wire
Design	Bjarne Hjertvik for Eurobib Direct

E3389



Owl Family

We have gathered the popular Owl family here as a focal point for books and other media in the form of a wall-mounted display rail.

Size	W600 x D55 x H383 mm Display depth: 60 mm
Material	Powdercoated steel
Design	Louise Hederström for Eurobib Direct

E3391



Important information!

Fixing devices for the wall are not included since different wall materials require different types of fixing devices. Use fixing devices suitable for the walls at your workplace. For advice on suitable fixing systems, contact your local specialized dealer.

More display solutions on wearelibrarypeople.com/display



Owl and all of his friends are equipped with keyhole attachments for wall mount. See p. 5 to meet the whole group of friends.



E3816



E3817

WE
ARE
LIBRARY
PEOPLE®

CREATE ATTRACTIVE DISPLAY SOLUTIONS!

The possibilities are practically endless – show off new arrivals or provide space for a temporary art or photo exhibition.
Let visitors reap the fruits of what you want to show off!



On a Green Twig

Tree ready for immediate planting!
Display rails for books and other media that are as decorative as they are useful.

Size	W1922 x D100 x H1650 mm
Material	Powdercoated steel
Design	Louise Hederström for Eurobib Direct

E3816 green

On a Bare Twig

Decorative display in the form of a leafless tree in its white winter glory. See photo on previous page.

Size	W1922 x D100 x H1600 mm
Material	Powdercoated steel
Design	Louise Hederström for Eurobib Direct

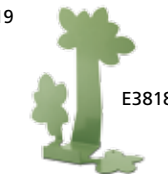
E3817 white

Tips for On a Green Twig

- E3818 Twigs Book Display
- E3819 Twigs Book Support, right
- E3820 Twigs Book Support, left



E3819



E3818

Make sure you have a wall space with clearance for about 2.5 m in width.



E3814



E3796

You can buy all parts of the three individually.
This also applies to white version.

MAKE USE OF YOUR END PANELS

Good advice doesn't have to be expensive. If you don't have enough wall space, use the end panels of the shelving systems. Here you will find a selection of smart solutions, such as holders for information, showing the way, or displaying books.



Self-adhesive magnetic frame

The self-adhesive magnetic frame can be placed on doors, windows, walls, end panels etc; and can be used for both portrait and landscape display. The magnetic front panels opens to allow easy replacement of inserts.

Material	Plastic, PVC with magnetic frame
Unit	2 pcs

E3770	A3, black
E3771	A3, silver
E3764	A4, black
E3767	A4, silver
E3765	A5, black
E3768	A5, silver
E3766	A6, black
E3769	A6, silver



Information Sign Holder

Stylish sign holder for customised inserts. Non-reflective front made of acrylic. Suitable for walls, doors and end panels. Blank insert, fastening pads and screws included.

Material	Aluminium with acrylic front
----------	------------------------------

E3760	W210 x H148,5 mm
E3761	A4, vertical
E3762	A4, horizontal
E3763	A3, vertical



Cube

Holder with rear-folding spacer mounts. Creates a stylish, alluring space between the wall and your media. Suitable for standard and slightly larger-sized books.

Size	W500 x D160 x H220 mm Display depth: 75 mm
Material	Clear acrylic, PMMA
Design	Franz James for Eurobib Direct

E6726

Gavla

Versatile holder for face-forward display of books. Works with most shelving systems with sturdy end panels. Simply place on a suitable shelf using the bracket.

Size	W210 x D70 x H77 mm Display depth: 38 mm
Material	Powdercoated steel
Design	Franz James for Eurobib Direct

E3570



E3761



E3570



E6726



E82853

Sharp

Classy metal display

Group in different lengths on wall, use one on an end panel or place several after each other in an effectful and eye-catching line. With keyhole fittings and a rubber mat included.

Size	W280/580/1000 x D80 x H22 mm (front)/H65 mm (back)
Material	Powdercoated steel
Design	Eurobib Direct

E7690	W280 mm, white
E7691	W280 mm, steel look
E7692	W580 mm, white
E7693	W580 mm, steel look
E7694	W1000 mm, white
E7695	W1000 mm, steel look



E7694

E7693

E7690

Display Shelf

Classy wooden display

Versatile shelf for wall mounting with front edge. Position individually or group several laterally or vertically. With keyhole fittings.

Size	W500/750/1000 x D96 mm
Material	Melamine on particle board

E82850	W500 mm, white
E82853	W500 mm, black
E82851	W750 mm, white
E82854	W750 mm, black
E82852	W1000 mm, white
E82855	W1000 mm, black



Our combination of melamine and particle board shelf is equal parts austere and durable!



E7690



Large selection of magnetic frames

If you have metal end panels, you can use frames with a magnetic back. We also have frames with a static back that can be applied to windows and other glass panels – no adhesive required.

More information on wearelibrarypeople.com/signage

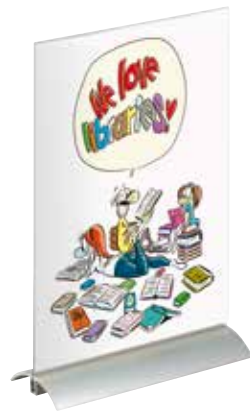


Important information!

Fixing devices for the end panels are not included since different materials require different types of fixing devices. Use fixing devices suitable for the end panels at your workplace.

SHOW THE WAY

Well thought-out signage that shows the way with texts or symbols significantly reduces the number of signs and/or digital solutions needed. Use graphics as signage or for purely decorative purposes – an easy way to revitalise a room and give it a new feel.

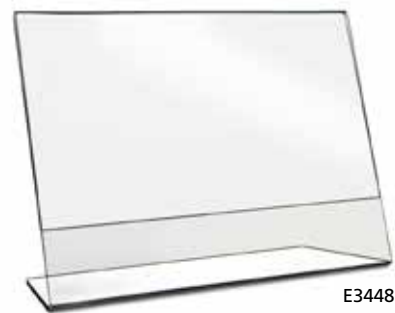


Desktop Unit

Visualise the news or themes
Exclusive unit in several sizes for tables, counter-tops, shelves, window displays, etc. Simple to replace contents. White insert marker included.

Material	Acrylic, PMMA with aluminium foot
----------	-----------------------------------

E3783	W297 x H105 mm
E3784	W420 x H149 mm
E3785	W210 x H305 mm (A4)



Sign Stand

Practical stand for signs and information.

Size	A5: W150 x D100 x H215 mm A4: W210 x D115 x H300 mm A3: W300 x D140 x H435 mm A4 landscape: W300 x D90 x H216 mm
Material	Clear acrylic, PMMA

E3414	A5
E3426	A4
E3427	A3
E3448	A4 landscape



Table Sign Holder

Free-standing sign holder in metal and with silver coloured magnetic frame for A4 format. Change information without losing aesthetics. The holder is slightly concave, which provides a comfortable, ergonomic reading angle. Can be altered between horizontal and vertical position.

Size	W235 x H335 mm
Material	Metal, plastic with magnetic frame

E3794

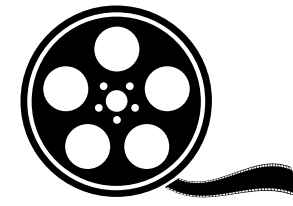
INFO

Info

Universal display with text in capital letters. Whole sheet with transparent background.

Size	W800 x H400 mm
------	----------------

E2454



Film Roll

A classic symbol that can be used to illustrate the modern media used today.

Size	W586 x H400 mm
------	----------------

E2453



Notes

Are you a key player?
Five punched out note symbols in two sizes on a sheet. For the music corner, as a display or as pure decoration.

Size	Large: W382 x H471 mm Small: W209 x H298 mm
Unit	5 small and 5 large note symbols, punched out on sheet

E2459

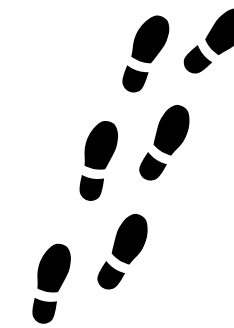


Detective Story Corner

Clarify what stories might take place between the book covers with the help of these symbols.

Size	Bullet hole: Ø60 mm Pistol: W300 x 150 mm
Unit	Pistol with three bullet holes, punched out on sheet

E2460

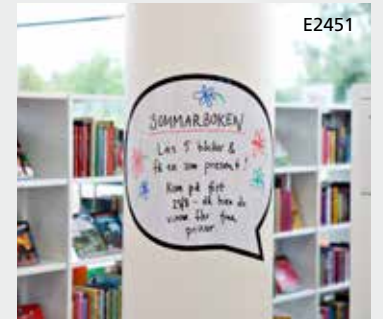


Shoe Prints

Shoe prints in two sizes for placement on a wall or floor. Punched out figures on a sheet with extra durable surface and with good adhesion on a flat surface. For placement on wall or floor.

Size	S: L150 mm L: L250 mm
Unit	3 pair/pack

E2462	S
E2463	L



E2451

Chat Bubble

Chat bubble with whiteboard surface makes it possible to provide tips about events, news or information with different messages whenever you like!

Size	L: W800 x H700 mm S: W580 x H480 mm
------	--

E2450	L
E2451	S



E2452

Winged Words

Sheet with eleven punched out, open books in varying sizes. Place together or separately.

Size	W505 x H1050 mm
Unit	11 books/sheet

E2452

Dead Man

Floor foil with contour of a body. No one can misunderstand what type of literature is found on the nearby shelf... Punched out figure on a sheet with extra durable surface and with good adhesion on a flat surface. For placement on wall or floor.

Size	W505 x H1050 mm
------	-----------------

E2461



E2461



More signage on wearelibrarypeople.com/signage

DECORATIVE STANDS TO CELEBRATE THE HOLIDAYS

Just like good books can treat readers to holiday celebrations, you can also create spaces that evoke a sense of celebration for the upcoming holiday.



E3506



Pixie I

Any visitors on Santa's nice list here? Create the festive spirit with Pixie. Can be used both freestanding and wall-mounted.

Size	W249 x D127 x H311 mm Display depth: 56 mm
Material	Powdercoated steel
Design	Louise Hederström & Dan Jonsson for Eurobib Direct

E3506



Nordmann

An enlightened tree for enlightened visitors? Guaranteed to be free from needles. No watering required! Pine cones not included. Can be used both freestanding and wall-mounted.

Size	W198 x D127 x H311 mm Display depth: 56 mm
Material	Powdercoated steel
Design	Louise Hederström & Dan Jonsson for Eurobib Direct

E3508



Chicken

Book! Book! A decorative display that invites visitors to pick up a book and celebrate Easter in the library. Can be used both freestanding and wall-mounted.

Size	W256 x D143 x H323 mm Display depth: 56 mm
Material	Powdercoated steel
Design	Louise Hederström & Dan Jonsson for Eurobib Direct

E3501



Rabbit

What will the Easter bunny show this year? Use the Rabbit to display fun Easter stories. Can be used both free-standing and wall-mounted.

Size	W160 x D127 x H342 mm Display depth: 56 mm
Material	Powdercoated steel
Design	Louise Hederström & Dan Jonsson for Eurobib Direct

E3392



See also Happy Bird on p. 76.

More display solutions on wearelibrarypeople.com/display



DISPLAY & STORAGE FURNITURE



BECOME YOUR OWN URBAN PLANNER

Build inspiring “urban spaces” with buildings of different height, depths, and colours. Invite visitors on a walk around town along the building façades with inviting “display windows” full of books, magazines and much more! Ideal as focal points for all visitors.

The new multifunctional modules open up a wealth of possibilities. The modules are available in single- or double-sided versions and in three heights.

The lower heights help to create environments that are easy for both visitors and staff to navigate. Simple to rearrange and move around. User friendliness is in focus.



Memphis is made of wood from sustainable forestry

You can, for example, store books on some shelves and display them on others (adjacent, upper or lower shelves).

The shelves have a front edge, and can be positioned flat with the edge in the rear or as a sloping magazine shelf with the edge at the front.

The sectional design in combination with the many pre-drilled holes allows great variation in the positioning of the shelves and allows for creative solutions.



MEMPHIS



E21151

Mini

6/12 movable shelves with fixed top and bottom shelf. Single-sided modules are supplied with adjustable feet, while double-sided modules are supplied with castors (two are lockable).

Capacity	Single: 168 standard books Double: 336 standard books
Size	Single: W900 x D322 x H992 mm Double: W900 x D644 x H1068 mm
Material	Non-stained or stained birch plywood (UV-lacquered)
Design	Louise Hederström for Eurobib Direct
Delivered	Flatpacked; needs assembly

Mini, single-sided with 6 shelves

E21100	birch, non-stained
E21101	stained grey
E21102	stained blue
E21103	stained green
E21104	stained rose
E21105	stained orange

Mini, double-sided with 12 shelves

E21150	birch, non-stained
E21151	stained grey
E21152	stained blue
E21153	stained green
E21154	stained rose
E21155	stained orange



E21163

Midi

8/16 movable shelves with fixed top and bottom shelf. Single-sided modules are supplied with adjustable feet, while double-sided modules are supplied with wheels (two are lockable).

Capacity	Single: 224 standard books Double: 448 standard books
Size	Single: W900 x D322 x H1248 mm Double: W900 x D644 x H1324 mm
Material	Non-stained or stained birch plywood (UV-lacquered)
Design	Louise Hederström for Eurobib Direct
Delivered	Flatpacked; needs assembly

Midi, single-sided with 8 shelves

E21110	birch, non-stained
E21111	stained grey
E21112	stained blue
E21113	stained green
E21114	stained rose
E21115	stained orange

Midi, double-sided with 16 shelves

E21160	birch, non-stained
E21161	stained grey
E21162	stained blue
E21163	stained green
E21164	stained rose
E21165	stained orange



E21175

Maxi

10/20 movable shelves with fixed top and bottom shelf. Single-sided modules are supplied with adjustable feet, while double-sided modules are supplied with wheels (two are lockable).

Capacity	Single: 280 standard books Double: 560 standard books
Size	Single: W900 x D322 x H1504 mm Double: W900 x D644 x H1580 mm
Material	Non-stained or stained birch plywood (UV-lacquered)
Design	Louise Hederström for Eurobib Direct
Delivered	Flatpacked; needs assembly

Maxi, single-sided with 10 shelves

E21120	birch, non-stained
E21121	stained grey
E21122	stained blue
E21123	stained green
E21124	stained rose
E21125	stained orange

Maxi, double-sided with 20 shelves

E21170	birch, non-stained
E21171	stained grey
E21172	stained blue
E21173	stained green
E21174	stained rose
E21175	stained orange



Louise Hederström has been our “in-house designer” for many years now and has designed some of our most popular collections. You haven’t missed them, have you?

Meet the designer
wearelibrarypeople/louisehederstrom



SHOWALOT

A collection that offers many exciting solutions. Whether the focus is on front-facing display of books or other media, search stations, or study areas. Order as a complete unit right from the start, or add on later using our smart accessory packages.

Showalot Maxi

Equipped with 5 adjustable shelves with front edging (slightly adjustable in depth). Each section comes with adjustable feet, as well as fittings for fastening sections together.

Capacity	45-60 standard books (face forward)
Size	W627 x D284 x H1752 mm
Material	Laminated plywood
Design	Louise Hederström for Eurobib Direct
Delivered	Flatpacked; needs assembly

E4466	white
E4467	black

Desk plates for Showalot Maxi

E4490	single-sided, white
E4491	single-sided, black
E4492	double-sided, white
E4493	double-sided, black

Accessories for Showalot Mini

E4472	Desk Plate, white
E4473	Desk Plate, black
E44709	Extra shelves, 2 pcs, white
E44719	Extra shelves, 2 pcs, black

If you require alternative colours or wood types, please contact us.

Showalot Mini

Equipped with 2 adjustable shelves with front edging (slightly adjustable in depth). Each section comes with adjustable feet, as well as fittings for fastening sections together.

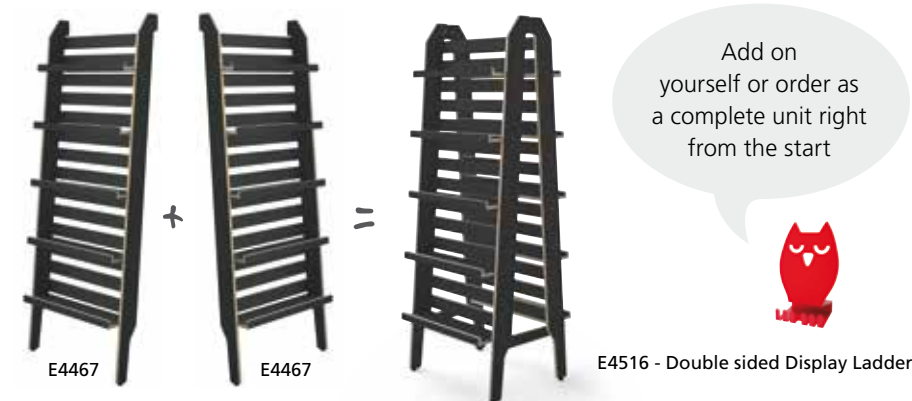
Capacity	40-50 picture books (face forward)
Size	W1077 x D284 x H1156 mm
Material	Laminated plywood
Design	Louise Hederström for Eurobib Direct
Delivered	Flatpacked; needs assembly

E4470	white
E4471	black



E4471 - Single sided Display Ladder

SHOWALOT MAXI



Add on yourself or order as a complete unit right from the start



E4516 - Double sided Display Ladder



E4517 - Single sided Search Station



E4520 - Double sided Search Station

A collection of modular sections with extra everything for everyone

What just may be our most popular and versatile furniture for libraries of all time!

Now available in more variants in an improved design. A collection that makes your work easier and helps most visitors meet most needs.

Almost sounds too good to be true, doesn't it? Judge for yourself using the questions below:

Do I need ...

- versatile and flexible solutions for front-facing display of books or other media?
- adjustable shelves with generous depth; room for more books one in front of the other (easy to fill up)?
- easy assembly and positioning (small number of parts and fittings)?
- solutions that make it easy to add to, take away from, or move around (without having to disassemble)?
- solutions that enable good monitoring in different environments (schools, libraries with extended opening hours, etc.)?
- solutions with a reliable, stable and safe design with respect to visitors?
- multifunctional solutions to create new features as needed?

If you answered yes to these questions, you should definitely take a look at these pages.



E4466



Louise Hederström has been our "in-house designer" for many years now and has designed some of our most popular collections. You haven't missed them, have you?

Meet the designer [wearelibrarypeople.com/louisehederstrom](https://www.wearelibrarypeople.com/louisehederstrom)

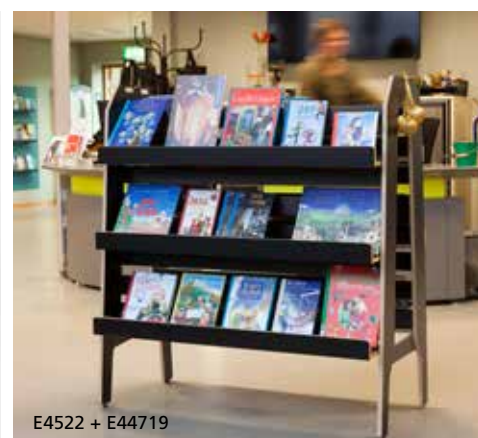


Plus Design

We use laminated birch plywood – here with visible edges. All to create both a durable surface and a lasting construction. Perfect for the most demanding library environments!

SHOWALOT MINI

Showalot Mini also offers an exciting solution. Whether we're talking about front-facing display of picture books or study areas. Order a complete unit right from the start or add on later; see previous pages.



Important information

Fixing devices for the wall are not included since different wall materials require different types of fixing devices. Use fixing devices suitable for the walls at your workplace. For advice on suitable fixing systems, contact your local specialised dealer.

More information on wearelibrarypeople.com/showalot



MOBILE DISPLAY

We have further developed the well-known "A" sign and equipped it with castors and shelves so that your books or other media can get all the attention they deserve. Ideal in open areas or entrances, where smaller podiums tend to disappear. Place them individually or in a group.



Say "A"

Flexible and mobile front-facing display
Display of books, picture books/comic book albums, or folios. Equipped with three or four display shelves on each side depending on the book format. Shelves with generous display depth and rubber mats for up to three standard books or eight picture books on top of each other.

Capacity	80-100 standard books/ 165 picture books.
Size	W920 x D920 x H1562 mm
Material	Laminated plywood or melaminecoated particle board
Castors	Ø75 mm, two are lockable
Design	Bjarne Hjertvik for Eurobib Direct
Delivered	Flatpacked; needs assembly
E21200	white, laminate
E21210	anthracite, laminate
E21220	white, melamine
E21230	anthracite, melamine

Accessories for Say "A"

Sign in solid white acrylic (sign holder included).

E21250



New!



DISPLAY TOWERS

Ideal for storing and displaying books and other media.
Create attractive focus points for your visitors.



Book Tower

All-round tower
Tower with six shelves, with four compartments on each level. Castor plate sold separately.

Capacity	Midi: 180 standard books Maxi: 200 standard books
Size	Midi: W482 x D482 x H1560 mm Maxi: W552 x D552 x H 1800 mm
Material	Lacquered MDF or veneered particle board, panels in acrylic, PMMA
Design	Niklas Dahlman for Eurobib Direct
Delivered	Flatpacked; needs assembly

E4351	Midi, white
E4352	Midi, birch
E4353	Maxi, white
E4354	Maxi, birch

Castor plate for Book Tower

E4407	Midi, white
E4408	Midi, birch
E4409	Maxi, white
E4410	Maxi, birch



Quattro

Popular wheeled tower
Colourful media tower for the frontfacing display of books, etc.
Supplied with acrylic display holders, set of castors and adjustable feet.

Size	Mini: W335 x D335 x H1220 mm (incl. castors/12 display holders) Midi: W335 x D335 x H1265 mm (incl. castors/16 display holders) Maxi: W500 x D500 x H1788 mm (incl. castors/20 display holders)
Material	Midi/Mini: Laminated plywood Maxi: Lacquered MDF
Castors	Ø50 mm, two are lockable
Design	Niklas Dahlman for Eurobib Direct
Delivered	Flatpacked; needs assembly

E4434	Mini, white
E4435	Mini, black
E4436	Mini, orange
E4437	Mini, lime
E4438	Mini, blue

E4478	Midi, white
E4479	Midi, black
E4480	Midi, orange
E4481	Midi, lime
E4482	Midi, blue

E4475	Maxi, white
E4476	Maxi, black



Book Carousel

Mobile front display with rotating baskets.
Sign holder and castors included.

Capacity	Midi: 40 standard books Maxi: 50 standard books
Size	Midi: Ø700 x H1340 mm Maxi: Ø700 x H1620 mm
Material	Powdercoated steelwire
Castors	Ø50 mm, two are lockable
Design	BS Eurobib
Delivered	Flatpacked; needs assembly

E36069	Midi
E36080	Maxi



Labyrinth

Smart display tower on castors
Tower combining display with storage.
20 compartments spread over five levels.

Capacity	240 standard books
Size	W580 x D580 x H1750 mm
Material	Melamincoated particle board
Castors	Ø75 mm, two are lockable
Design	Schulz Speyer
Delivered	Flatpacked; needs assembly

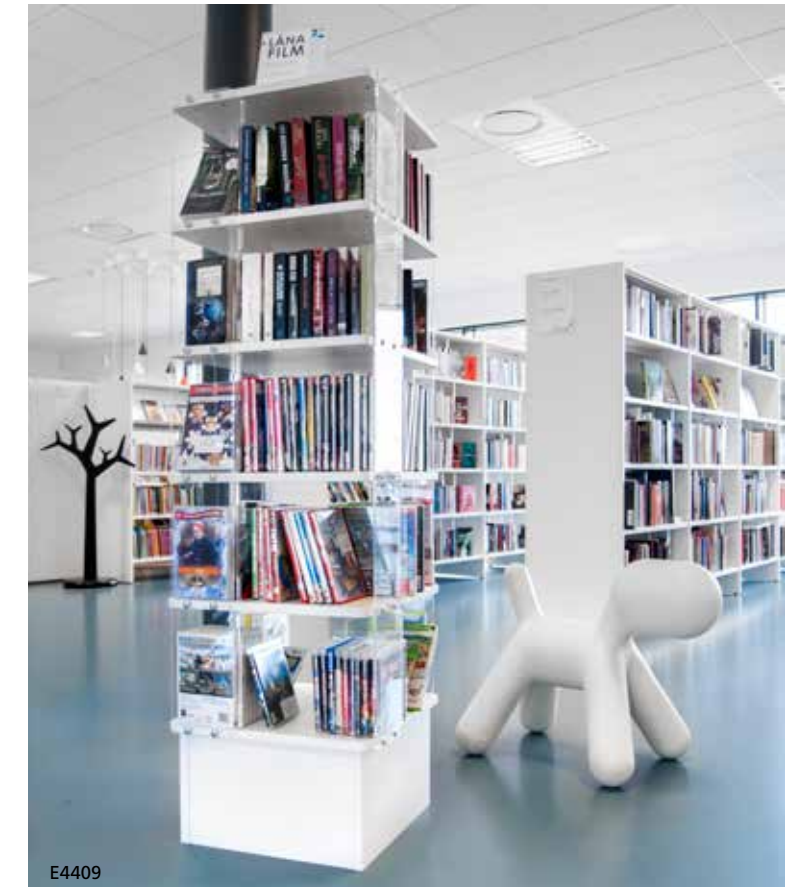
E5805	white/red
E5806	white/black



E4480



E5805



E4409



E4409



E5806



More information on
wearelibrarypeople.com

TEMPORARY EXHIBITIONS

Display student work at the school library with folding cardboard screens, activate library visitors by providing reading tips on wall-mounted, magnetic whiteboards, or display objects together with books.



Cube

All-round, modular
Smart display and exhibition tower for frontfacing display of books, magazines and exhibited objects. Create new, exciting displays and exhibitions – all in one. The possibilities are endless.

Capacity	4 standard books per holder
Size	W390 x D390 x H1565 mm
Material	Acrylic, PMMA
Design	Franz James for Eurobib Direct
Delivered	Flatpacked; needs assembly

E6708	white
E6717	clear/black
E6718	white/clear
E6719	black/clear
E6723	black



Alexander

Folded, light-weight display screen in cardboard
Corrugated cardboard screens for temporary exhibit; light weight and affordable. If you don't want to insert pins into the screen you can write or draw directly on it.

Size	W2400 (3 x 800) x H1800 mm
Material	Corrugated cardboard, white
Unit	3 pcs

E36150

Find all the "loose parts" for Cube in our webshop



Sketchalot

Easily placed whiteboard
Modular whiteboard that does not require wall mounting. Place it anywhere directly against the wall, separately or with several placed closely together. Not only can you write on the whiteboard, the surface is also magnetic. Sketchalot stands on two removable, easily assembled support legs.

Size	W790 x D210 (incl. feet) x H2000 mm
Material	Whiteboard with magnetic surface, feet in white lacquered aluminium
Design	Eelco Voogd

E36217

Tips for Sketchalot

E76230	Magnet set, 5 pcs
E3776	Magnetic heading frame, 5 pcs
E3774	Magnetic frame, 2 pcs



Jumbo

All-round podiums or table
Smart, reversible and stackable table/podiums in three different sizes. Two trays in different formats accompany each table stand.

Size	Mini: Ø456/620 x H465 mm Midi: Ø456/620 x H670 mm Maxi: Ø456/620 x H1025 mm
Material	Powdercoated steelwire
Design	Tom Stepp for Eurobib Direct
Delivered	No assembly required (no tools are needed)

E6749	Mini
E6750	Midi
E6751	Maxi

Accessories & tips for Jumbo

E6748	Bowl
E6752	Stool, 2 pcs
E3394	Lion book display
E3395	Lioness book display



E6748



E6752

Emma

A simple way to catch people's attention
Functional, versatile podium for display of books and/or other media. Supplied with castors and adjustable feet.

Size	W940 x D940 x H1018 mm (H1083 incl. castors)
Material	Melaminecoated particle board
Castors	Ø50 mm, two are lockable
Design	BS Eurobib
Delivered	Flatpacked; needs assembly

E4361	white
E4362	anthracite



E4362



E6749 + E3394 + E3395

E6751

E6750 + E6748

E6751

MARIA DISPLAY AND EXHIBITION UNITS

Perfect for face-on browsing, temporary exhibitions or simply to sit on.
Place them individually or in groups by entrances, end panels or external display windows.



Maria

Display, quick-pick, browsing cubes, seating
These multifunctional display and exhibition units come in sets of 3. Each cube has a removable top plate and smart partitions that allow the top section to be divided into 1, 2, 3 or 4 compartments depending on book size. Combine this with the castors or a seating plate and the possibilities are endless...!

Comes with adjustable feet and grooved rubber mat.

Size	W500 x D500 x H400/600/800 mm
Material	Melaminecoated particle board
Design	BS Eurobib
Delivered	Flatpacked; needs assembly

E4574	white
E4575	anthracite

Accessories & tips for Maria

E4576	Board with castors, white
E4577	Board with castors, anthracite
E4578	Seating plate, white/cork
E4579	Seating plate, anthracite/cork
E3418	Stackable Display Stand
E3424	Linnea Display Stand



If you require any alternative colours or wood types, please contact us.



E3418



E3424



E4574

Why Maria?

“The Maria podiums are good for creating small and large exhibition islands in the library.
The simplistic shape fits well in most places and makes the books stand out.

Because of their small size and different heights, the podiums can be placed in the middle of the room, like a little landscape or be placed individually at the end of the shelving. When the top plate is removed it also transforms into a browser, so you can easily change the exhibition.

It is also easy to do something extra - just add a bench, high tables or plants and it invites you to sit in between the displayed books.”

Unni N. Iwanczuk, Interior Designer



“We love using our new ‘Maria’ display furniture!
It enables us to flexibly present media any time we want! Whether we use all three podiums as a unit, or just use one – ‘Maria’ gives the library a boost!”

Maria Pinsker, Mainburg Public Library in Germany



2 x E4575 + 2 x E4577

NEWSPAPER AND MAGAZINE AREA

Furniture and smart accessories for your magazine readers.



E4502 + E4504 x 2



Magazine covers, A4

Practical covers for magazines in A4-format.

Material	Plastic, PVC
Unit	10 pcs

E2902

ChillBill™

Comfortable, eco-friendly sitting bags (environmentally neutral filling) with good comfort and high durability. And no need for refill!

Size	S: Ø900 mm L: Ø1200 mm
Material	Durable, removable and washable nylon
Design	Tom Madslangrud

E37213	S, orange
E37214	S, lime
E37215	S, grey
E37210	L, orange
E37211	L, lime
E37212	L, grey



Plus design

Showandstore

Clear display, accessible storage of periodicals and other periodical publications. Cabinet doors with acrylic door fronts; generous display depth. Supplied with adjustable feet.

Size	3 x 3-compartments: W930 x D370 x H1520 mm 3 x 4-compartments: W930 x D370 x H1888 mm
Material	Laminated plywood
Design	Bjarne Hjertvik for Eurobib Direct
Delivered	Flatpacked; needs assembly
E4500	3 x 3, white
E4501	3 x 3, black
E4502	3 x 4, white
E4503	3 x 4, black

Accessories for Showandstore

E4504	Kick plate, white
E4505	Kick plate, black
E4506	Drawer on castors, white
E4507	Drawer on castors, black



Oslo

Generous and easily accessible storage Tower for storage and display of magazines, periodicals, annuals, etc. 16 transparent acrylic holders provide perfect display for periodical front covers.

Size	W620 x D620 x H1600 mm
Material	Melamincoated or veneered particle board
Castors	Ø75 mm, two are lockable
Design	Eurobib Direct
Delivered	Fully assembled

E4357	white
E4358	birch



New!

Hooked on news

Easy-to-position periodical holder Ideal wall-mounted, acrylic holder with keyhole mount for newspapers and other publications.

Capacity	4 newspapers
Size	W220 x D140 x H740 mm
Material	Frosted acrylic, PMMA
Design	Tom Stepp for Eurobib Direct

E3521	yellow
E3522	orange
E3523	dark grey

Newspaper & Magazine sticks

Material	Aluminium stick, beech handle
E2038	L525 mm
E2036	L600 mm
E2039	L765 mm
E2040	Stick rack



Magazine boxes

Magazine boxes for displaying and storing magazines. The fold-down lid also serves as a display holder for the latest issues.

See more options on page 103...



Ergospace

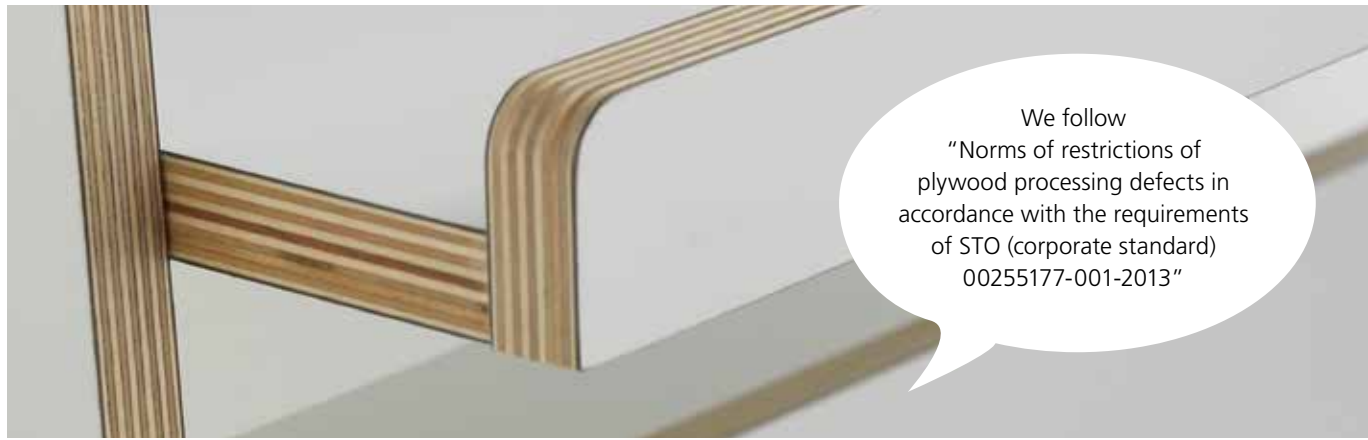
Functional Periodical storage box (A4 size) with label holder. Ergospace is developed in collaboration with the Karoliska Institutet University Library. The label holder also functions as a practical finger grip and "foot rest"; avoid scratching the surface.

Size	W90 x D254 x H246 mm
Material	Plastic, PS

E50318



More information on wearelibrarypeople.com/magazine-area



We follow
 "Norms of restrictions of
 plywood processing defects in
 accordance with the requirements
 of STO (corporate standard)
 00255177-001-2013"



Memphis B/BB

IMPORTANT TO KNOW ABOUT PLYWOOD

Caring for you and your library is important to us at Eurobib Direct. We want to be able to offer you quality, affordable products you can rely on. We offer a wide range of products and several of them are made of materials such as birch plywood, with or without laminate.

Take a look at our book trolleys in the popular Plus series, the eye-catching Wildlife, Memphis or Cubic collection, etc. (furniture for learning environments) just to name a few. Products that are manufactured not only using environmentally-approved materials, but also using responsible forestry.

As a customer, we want you to feel confident about what birch plywood is, its different grades, and what distinguishes it.

Bjarne Hjertvik, Marketing Manager

Here are some background facts:

- Birch plywood can be roughly divided into three grades: A, B and C (A is the highest grade).
- From a single birch log, approx. 75% becomes grade C veneer, 20% grade B, and the rest grade A.
- All of our current products are manufactured from grade BB/BB or B/BB.
- Grade BB/BB is preferably used for products with high pressure laminate (HPL) applied to the surface in order to provide the best possible surface for adhesion. The exemption to this is the Memphis modules, where we chose the higher B/BB grade.

For more information, please visit wearelibrarypeople.com/quality



Wildlife BB/BB



Cubic BB/BB

SMART STORAGE

For all needs and ages – and with the environment in mind.



Zoofia

Storage bin with rivet reinforced sides, wooden base and wheels.

Size	W295 x D375 x H340 mm
Material	Fibre felt

E1928



Tellus

Practical storage and display on wheels. Comes with a conical shape with reinforced socket in the sides. Use for picture books, toys, paper recycling etc.

Size	W295 x D375 x H340 mm
Material	Fibre felt

- E1917 graphite grey
- E1918 light green
- E1919 orange
- E1920 turquoise
- E1921 white



Zoolle

Nice carry cases in two sizes with handles.

Size	S: W300 x D90 x H205 mm L: W350 x D105 x H235 mm
Material	Fibre felt

Unit	2 pcs (small + large)
------	-----------------------

E1934



Fiona

Periodical collector in A4 with label holder on front.

Size	A4: W85 x D255 x H315 mm
Material	Fibre felt

Unit	2 pcs
------	-------

E1925



Zoonia

Box with reinforced handles.

Size	W370 x D295 x H230 mm
Material	Fibre felt

E1929



Storage Boxes with lid

Practical and stylish archival and storage boxes with lid and label holders in graphite grey, with glossy or black lacquered fittings.

Size	Pluto: W255 x D340 x H70 mm (A4) Mars: W340 x D445 x H70 mm (A3) Tilda: W225 x D355 x H90 mm Tova: W355 x D265 x H130 mm Telma: W165 x D285 x H150 mm
Material	Fibre felt

- E1922 Pluto
- E1923 Mars
- E1924 Tilda
- E1933 Tova
- E1926 Telma



Recycled fibre board

The products of fibre board are made from recycled materials, such as corrugated cardboard and newspapers. The material is proven and works for all kinds of storage. All paint and varnish is water based.

More information on wearelibrarypeople.com



MOVING & STORAGE



Storage Box

Sturdy, stackable box.

Size	W340 x D415 x H235 mm
Material	Plastic, PP

E2938	frosted white
E2939	blue
E2940	red

Accessories for Storage Box

E2941	Lid, frosted white
E2942	Wheel Stand



Nellie

Boxes with motifs
Storage boxes with lids. Supplied flatpacked.

Size	W280 x D280 x H265 mm
Material	Fibre felt

E1930	Rocket
E1931	Elephant
E1932	Whale



The book is on the way

Practical cartons for shipping books.
Plastic handle included.

Size	W550 x D240 x H305 mm
Material	Heavy-duty, waxed cardboard
Unit	5 pcs

E2826



The book is on the way

Two-part carton, exterior and interior.
Plastic handle included with the interior carton.

Size	Exterior: W350 x D200 x H295 mm Interior: W325 x D190 x H285 mm
Material	Heavy-duty, waxed cardboard
Unit	5 pcs

E2825	exterior
E2824	interior

Accessories for The book is on the way

E2701	Address holder, 50 pcs
-------	------------------------



Book Box

Sturdy, spacious box for storage or book transportation.

Size	W300 x D225 x H450 mm
Material	Steel-tipped fibreboard

E2850



Sealable protective bag

Protect periodicals, puzzles, and more!
Protective bag with strong sliding-seal function that can withstand robust handling. Particularly suitable for storing toys, blocks, puzzles etc.

Size	A4: W325 x H235 mm A3: W445 x H325 mm
Material	Plastic, PP

E2958	A4
E2959	A3



BOOK & AV BROWSERS



Everything you need for moving and storage

Storage, handling and transport of media and other educational materials requires their own solutions. We have more to choose from!

Find all products at
wearelibrarypeople.com



WILDLIFE COLLECTION

We have worked extremely hard to create a collection of children's furniture especially designed for libraries and other learning environments. Children's furniture where playful designs, clever functions, solid construction and good choices of materials are brought together with care and concern for both the users (children and adults) and the environment. Furniture for children on children's terms!



Leopold

Watch out children!
Picture book browser with two compartments and two adjustable dividers.
Supplied with adjustable feet and rubber mats.
Suitable for children aged 4-8.

Capacity	120-140 picture books
Size	W835 x D740 x H863 mm
Material	Laminated plywood
Design	Louise Hederström & Dan Jonsson for Eurobib Direct
Delivered	Flatpacked; needs assembly

E7657



Dilly

Picture books in a line
Picture book browser with three compartments (browsed from one direction), and one display shelf with front moulding.
Supplied with adjustable feet and rubber mats.
Suitable for children aged 3-6.

Capacity	65-80 picture books
Size	W1548 x D354 x H358 mm
Material	Laminated plywood
Design	Louise Hederström & Dan Jonsson for Eurobib Direct
Delivered	Flatpacked; needs assembly

E7659

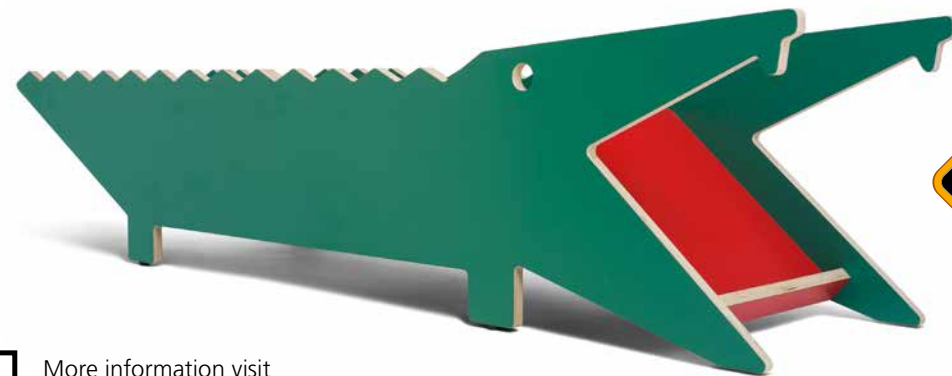


Gordon

Gather round Gordon
Picture book browser with two compartments and two adjustable dividers.
Supplied with adjustable feet and rubber mats.
Suitable for children aged 4-8.

Capacity	120-140 picture books
Size	W1018 x D736 x H904 mm
Material	Laminated plywood
Design	Louise Hederström & Dan Jonsson for Eurobib Direct
Delivered	Flatpacked; needs assembly

E7658



More information visit wearelibrarypeople.com/wildlife



Meet Elna and Elof on the next page...



Doris

Show off the picture books
Neat book browser for front display of picture books. Comes with two adjustable shelves with front edging.
Supplied with adjustable feet and rubber mats.
Suitable for children aged 4-8.

Capacity	90-100 picture books
Size	W776 x D1006 x H989 mm
Material	Laminated plywood
Design	Louise Hederström & Dan Jonsson for Eurobib Direct
Delivered	Flatpacked; needs assembly

E7661



The Wildlife collection is made of wood from sustainable forestry.



Ture

Easy access for the littlest ones
Cute picture book browser.
Supplied with adjustable feet and rubber mats.
Suitable for children aged 2-4.

Capacity	30 picture books
Size	W386 x D602 x H325 mm
Material	Laminated plywood
Design	Louise Hederström & Dan Jonsson for Eurobib Direct
Delivered	Flatpacked; needs assembly

E7660

Accessories for Ture

E766017 Seating Lid

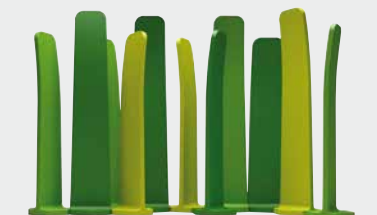
WILDLIFE THEMES



A day at the circus
You can create an exciting environment with the aid of Jumbo children's group (table and stools) and Leopold, Lion & Lioness.



A day in the desert
You can also create a bit of a desert feel using the Lapsus clothes tree (E23541-43) shaped like the typical desert cactus. Cheeky is the name and it lets children as well as 'bothersome' adults hang up their coats.



A day on the savannah
You can easily create a feel of the savannah using the spectacular Gradient Room Dividers (E23544-51), shaped like giant blades of grass - maybe elephant grass?. They help create peaceful zones for reading children and Leopold, Elna & Elof will feel right at home.



WILDLIFE COLLECTION

The rounded shapes of the figurative elements are designed with care for child safety. Rounded edges with soft edges help the youngest to have something to hold on to when browsing picture books.



Elof

For picture books
Book browser for display and storage. Fitted with two compartments with dividers and three adjustable shelves.
Supplied with adjustable feet and rubber mats.
Suitable for children aged 4-8.

Capacity	270-310 picture books
Size	W780 x D1208 x H1000 mm
Material	Laminated plywood
Design	Louise Hederström & Dan Jonsson for Eurobib Direct
Delivered	Flatpacked; needs assembly

E7655



Elof Reading Space

For picture books with a reading space
Book browser for display as well as reading. Fitted with a reading space and three adjustable shelves.
Supplied with adjustable feet and rubber mats.
Suitable for children aged 4-8.

Capacity	70 picture books
Size	W780 x D1208 x H1000 mm
Material	Laminated plywood
Design	Louise Hederström & Dan Jonsson for Eurobib Direct
Delivered	Flatpacked; needs assembly

E7656



Elna

For a larger amount of picture books
Voluminous book browser for display and storage. Fitted with four adjustable shelves, two compartments with dividers and a top storage shelf.
Supplied with adjustable feet and rubber mats.
Suitable for children aged 6-12.

Capacity	380-420 picture books
Size	W780 x D1528 x H1328 mm
Material	Laminated plywood
Design	Louise Hederström & Dan Jonsson for Eurobib Direct
Delivered	Flatpacked; needs assembly

E7654



Care instructions

Use furniture wax to treat the edges. This gives the edges both better protection against dirt and a nice finish. Apply a thin layer of wax with a fabric cloth and polish the edges. Contact your local paint retailer for a suitable furniture wax.

More information on wearelibrarypeople.com



FORMICA® HIGH PRESSURE LAMINATE

Excerpt from Formica Case Study, April 2018

Eurobib Direct's Wildlife collection is made of wood from sustainable forestry, and is an example of the company's ambition to develop and deliver environmentally-friendly and -approved products. The solid construction in the collection is specially designed for libraries and other learning environments. It incorporates smart features, imaginative design, and good material choices for care of both users and the environment.

Children are more vulnerable than adults when it comes to different factors in our immediate environment, due to both their physique and their movement patterns. Chemicals and environmental pollution are all around us in our day-to-day lives, with young children in many cases being more exposed than adults. There are several factors that contribute to this. For example, a child's high metabolism, respiratory rate and permeability through the skin cause them to

have a relatively high intake of environmental pollution. In addition, a child's organs are still developing, causing pollutants to remain in the body longer.

To ensure good indoor air quality, Formica's product range is GREENGUARD® Indoor Air Quality certified for interior building materials with low VOC emissions. The GREENGUARD Environmental Institute (GEI) has developed standards to define products and processes with low chemical emissions and particulate emissions for use indoors. The standards establish certification procedures, including test methods, permissible emission levels, collection of product samples, the actual tests, as well as programme application processes, toxicity limits and approval. The Formica Group's European manufacturing plants and distribution centres are FSC-certified, and the company's products have also been awarded the Carbon Reduction Label. According to the Formica Group's

life cycle assessment (LCA), Formica's products have minimal impact on the environment. Formica's products are resource efficient, and are registered in the product and material selection systems BASTA, SundaHus and Byggvarubedömningen. Moreover, they are manufactured in accordance with the EN438 product classification system.

About Formica® high pressure laminate
Formica® high pressure laminate (HPL) is manufactured by compressing multiple layers of impregnated paper under high pressure and high temperature. This produces a strong, durable and hygienic surface material that can be used in a variety of environments – there is an endless number of possibilities for design and use. HPL can be used on horizontal and vertical surfaces. It can also be heated and bent. A perfect solution for furniture, wall panels, workbenches, doors, and much more.



PICTURE BOOK BROWSERS

Create colourful and inspiring zones for your youngest readers.
More colourful libraries? Yes Please!



Anette XL

Double-sided browser for high capacity
Three tiered browser with dividers and storage drawers on castors underneath. Supplied with adjustable feet and rubber mats. Castors are ordered separately, see accessories. Suitable for children aged 3-8.

Capacity	280 picture books + 140 picture books (drawers)
Size	W930 x D795 x H750 mm
Material	Laminated plywood (Plus) or veneered MDF
Design	Eurobib Direct
Delivered	Flatpacked; needs assembly

E4346	white laminate (Plus)
E4347	birch veneer
E4355	beech veneer

Accessories for Anette

E4489	Castor set (Ø50 mm)
-------	---------------------



Anette

Lightly placed browsers with good capacity
Three tiered browser with dividers and storage drawer on castors underneath. Supplied with adjustable feet and rubber mats. Castors are ordered separately, see accessories. Suitable for children aged 3-8.

Capacity	140 picture books + 70 picture books (drawer)
Size	W930 x D410 x H750 mm
Material	Laminated plywood (Plus) or veneered MDF
Design	Eurobib Direct
Delivered	Flatpacked; needs assembly

E4334	white laminate (Plus)
E4344	birch veneer
E4345	beech veneer



If you require alternative colours or wood types, please contact us.



Julia

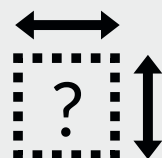
As colourful as it is durable
Browser with six compartments and five adjustable dividers. Supplied with adjustable feet and rubber mats. Castors are ordered separately, see accessories. Suitable for children age 4 and over.

Capacity	80 picture books
Size	W740 x D626 x H550 mm
Material	Laminated plywood
Design	Bjarne Hjertvik for Eurobib Direct
Delivered	Flatpacked; needs assembly

E7650	white laminate (Plus)
E7651	green laminate (Plus)
E7652	orange laminate (Plus)
E7653	blue laminate (Plus)

Accessories for Julia

E4485	Castor set (Ø50 mm)
-------	---------------------



Information on details such as compartments and shelves can be found on our website. Here you will also find complementary information, practical tips and assembly instructions, which you can download and print.

More information on wearelibrarypeople.com



CLASSIC PICTURE BOOK BROWSERS

Popular Linnéa together with our most classic browsers Big Claus & Little Claus all the time.

Linnéa

Book browser with adjustable back panel
Three tiered browser with storage room underneath. Set either at a low or high position. When mounted in the high position, the slot in the back panel can accommodate display and sign holders. Supplied with adjustable feet. Castors are ordered separately, see accessories. Suitable for children aged 4-8.

Capacity	170 picture books
Size	W945 x D410 x H960/1375 mm
Material	Veneered particle board / lacquered MDF or lacquered MDF
Design	Niklas Dahlman for Eurobib Direct
Delivered	Flatpacked; needs assembly

E4325	beech/white
E4327	birch/white
E4331	white/white



E4327 + E4225

E4331 + E4225 + E4333

Accessories for Linnéa

E4225	Castor set (Ø50 mm)
E4333	Display Holder
E3256	Sign Holder



Little Claus

Classic browser
Two tiered browser with five storage rooms underneath. Supplied with adjustable feet. Castors are ordered separately, see accessories. Suitable for children aged 4-10.

Capacity	120 picture books
Size	W911 x D380 x H707 mm
Material	Veneered particle board or lacquered MDF
Design	Eurobib Direct
Delivered	Flatpacked; needs assembly

E4236	beech
E4336	birch
E4338	red
E4340	green

Accessories for Little Claus & Big Claus

E4225	Castor set (Ø50 mm)
-------	---------------------



Big Claus

Classic browser
Three tiered browser with five storage rooms underneath. Supplied with adjustable feet. Castors are ordered separately, see accessories. Suitable for children aged 6-10.

Capacity	200 picture books
Size	W911 x D450 x 936 mm
Material	Veneered particle board or lacquered MDF
Design	Eurobib Direct
Delivered	Flatpacked; needs assembly

E4235	beech
E4335	birch
E4337	red
E4339	green



Children's Book Bus

Jump on board for a magical trip
Take the kids on a ride with the classic "VW T1 Bulli". Fun, smaller sized picture book browser with three compartments. Suitable for children aged 2-4.

Capacity	50 picture books
Size	W810 x D360 x H310 mm
Material	Printed MDF with protective coating
Design	Werkhaus
Delivered	Flatpacked; needs assembly

E15100



E4568 / E4563



If you require alternative colours or wood types, please contact us.



E4563

**WE
ARE
LIBRARY
PEOPLE®**



EASILY PLACED PICTURE BOOK BROWSERS

Book browser for display and storage of picture books and comics.



Box Mini

Picture book browser with four display compartments at the top. Ideal for small kids to browse through. Supplied with castors and with rubber mats. Suitable for children aged 3-6.

Capacity	125 picture books
Size	W720 x D720 x H290 mm (incl. castors)
Material	Melaminecoated particle board
Castors	Ø75 mm, two are lockable
Design	BCI
Delivered	Flatpacked; needs assembly

E4563	white
E4564	birch decor



Box Midi

Picture book browser with four display compartments at the top and four storage compartments at the bottom. Supplied with castors and with rubber mats. Suitable for children aged 6-10.

Capacity	250 picture books
Size	W720 x D720 x H640 mm (incl. castors)
Material	Melaminecoated particle board
Castors	Ø75 mm, two are lockable
Design	BCI
Delivered	Flatpacked; needs assembly

E4566	white
E4567	birch decor



Box Maxi

Book browser with four display compartments at the top and eight storage compartments at the bottom. Supplied with castors and with rubber mats. Suitable for both children and adults.

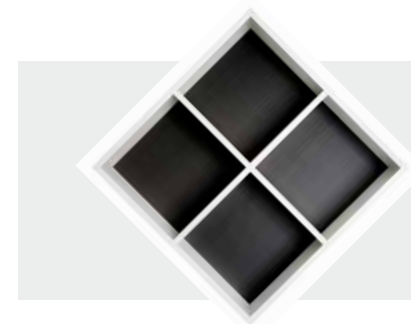
Capacity	375 comic books
Size	W720 x D720 x H995 mm (incl. castors)
Material	Melaminecoated particle board
Castors	Ø75 mm, two are lockable
Design	BCI
Delivered	Flatpacked; needs assembly

E4568	white
E4569	birch decor



Accessories for Box

E2664	Picture Book/Comic Index
E2442	Letter sheets, set



We have improved our inserts of rubber mats, so that your picture books stand extra steadily without sliding.

More information on wearelibrarypeople.com



AV BROWSERS

Here you will find our popular AV browsers and a selection of smart accessories.



Malmoe

Voluminous AV cabinet

Five tiered browser with dividers for displaying and storing CDs or DVDs. Choose between three drawers with dividers or a single storage shelf underneath. Supplied with adjustable feet.

Capacity	With drawers: 500-700 CD packaging* 480-540 DVD packaging* Without drawers: 180-270 CD packaging* 180-210 DVD packaging*
Size	W1060 x D600 x H1300 mm
Material	Veneered MDF with solid birch/ beech edging.
Design	Eurobib Direct
Delivered	Fully assembled

E37379	birch, drawers
E37380	beech, drawers
E37381	birch, shelf
E37382	beech, shelf



Discorama

Functional AV browser

AV browser for multi-tier display and storage of AV media. Equipped with five tiers, each with six roomy compartments for excellent visibility and accessibility. Supplied with rubber mats, dividers and adjustable feet.

Capacity	220 CD cases/360 CD pockets*
Size	W1195 x D660 x H1320 mm
Material	Veneered or lacquered MDF, lacquered metal
Design	Eurobib Direct
Delivered	Flatpacked; needs assembly

E4060	birch/grey
E4061	birch/white
E4062	white/white



E3812 - Unikeep™

* The number may vary depending on the selection of CD / DVD packaging.



Gladsaxe

CD sleeve for RFID reading

Storage for conventional processing and RFID reading. With space for cover, library label and colour markers. Felt on the inside to give the CD extra protection.

Size	W135 x D175 mm
Material	Plastic, PP
Discs	1 pc
Unit	50 pcs

E170210	white
E170211	black



Index tabs

Practical index tabs with text in durable, transparent acrylic for CDs or DVDs. Supplied with protective film. Remove before use.

Text	A-U, VW, XYZ, ÅÄÖ, ÆØÅ, Ü.
Size	CD: W142 x H178 mm DVD: W142 x H255 mm
Material	Acrylic, PMMA
Unit	26 pcs

E2660	CD
E2663	DVD



Malmoe + E170211



E4062



We have much more to choose from...

In our online store you will find everything you need for your media library- everything from furniture and divisions to packaging and signage.

More information on wearelibrarypeople.com/media



PICTURE BOOK BROWSERS

Here you will find a selection of classic picture book browsers.

Julia

Picture book browser for face-forward display with three or five removable dividers.

Capacity	Midi: 60 picture books Maxi: 80 picture books
Size	Midi: W860 x D375 x H585 mm Maxi: W740 x D625 x H550 mm
Material	Veneered particle board
Design	Eurobib Direct
Delivered	Flatpacked; needs assembly

E4229	Midi, beech
E4329	Midi, birch
E4065	Maxi, beech
E4365	Maxi, birch

Accessories for Julia

E4224	Castor set (Ø50 mm)
-------	---------------------

Accessories for Julia Midi

E4230	extra shelf, beech
E4330	extra shelf, birch



Mobile Book Browser

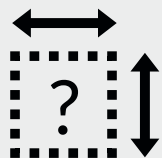
Good overview, easy access
Standalone, double-sided display & storage trolley for children's books. Equipped with three shelves for face-forward display and a storage compartment on each side. Simple to assemble due to smart plug-in system.

Size	W1020 x D650 x H1300 mm
Material	Lacquered MDF
Castors	Ø50 mm, one is lockable
Design	Werkhaus
Delivered	Flatpacked; needs assembly

E15131	red
E15132	anthracite



BOOK TROLLEYS & RETURN CABINETS



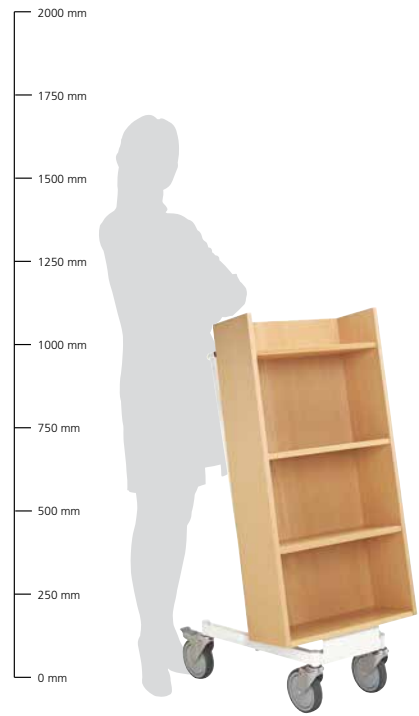
Information on details such as compartments and shelves can be found on our website. Here you will also find complementary information, practical tips and assembly instructions, which you can download and print.

Find specifications on wearelibrarypeople.com



HALLAND BOOK TROLLEYS

Single-sided trolleys with four sloping shelves (two adjustable).
Choose between veneered classics or laminated trolleys in our popular Plus Design.



Halland, birch veneer

A faithful servant in all situations
Single-sided trolley with 4 sloping shelves (2 adjustable).

Capacity	65 standard books
Size	W576 x D496 x H1120 mm
Material	Veneered particle board, powdercoated steel
Castors	Ø125 mm, two are lockable
Design	Eurobib Direct
Delivered	Flatpacked; needs assembly

- E4215 grey frame/birch
- E4216 graphite grey frame/birch
- E4217 white frame/birch

Halland, beech veneer

A faithful servant in all situations
Single-sided trolley with 4 sloping shelves (2 adjustable).

Capacity	65 standard books
Size	W576 x D496 x H1120 mm
Material	Veneered particle board, powdercoated steel
Castors	Ø125 mm, two are lockable
Design	Eurobib Direct
Delivered	Flatpacked; needs assembly

- E4213 red frame/beech
- E4214 white frame/beech

Looking for more colours or types of wood? Contact us, we will be happy to advise you!

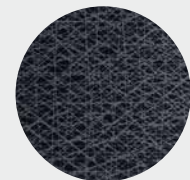


Halland, Plus

Colourful and durable
The Halland book trolley in laminated plywood with 4 protruding shelves, giving it a generous shelf depth. 4 tilted shelves in total, 2 of which are adjustable.

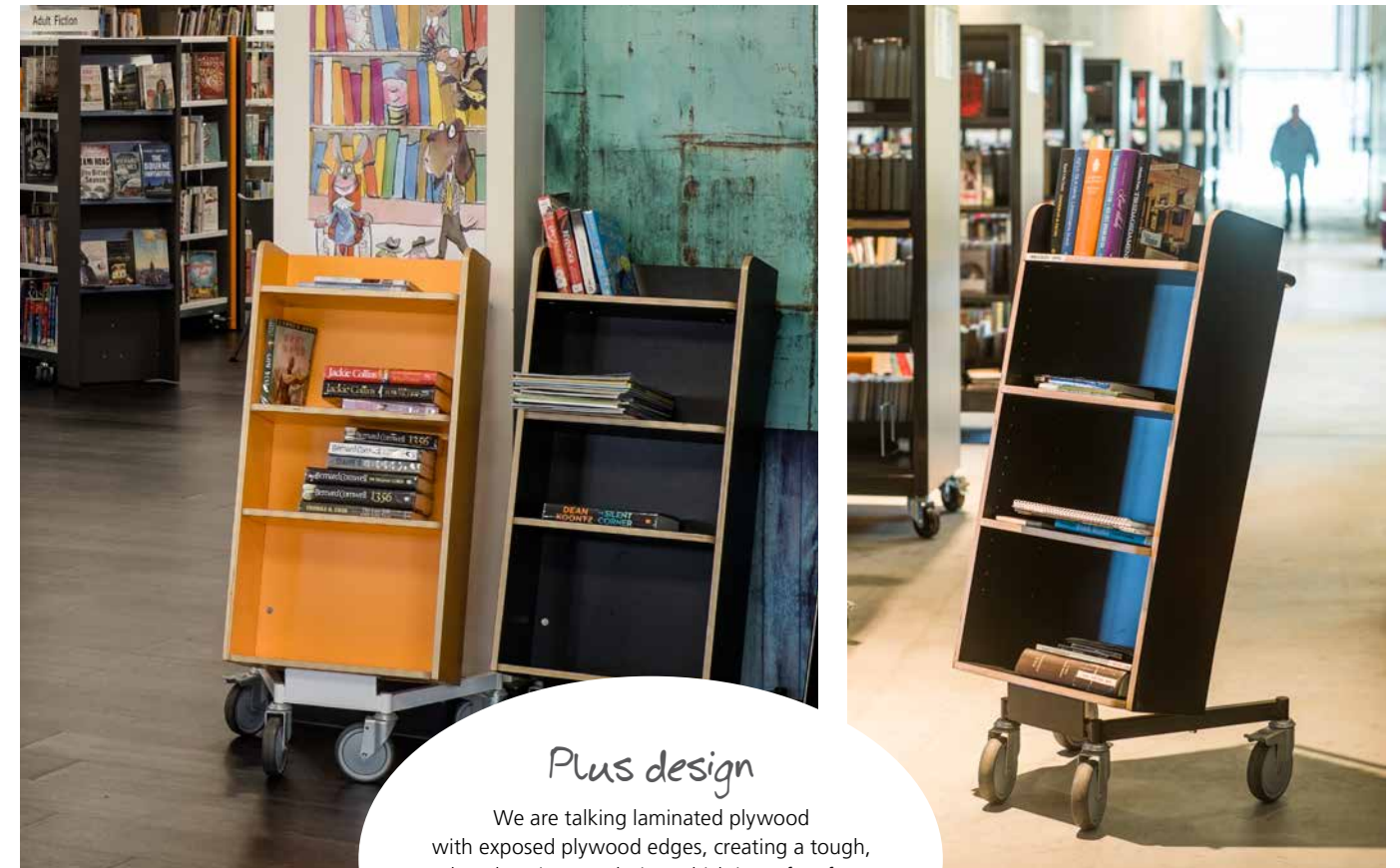
Capacity	65 standard books
Size	W576 x D496 x H1120 mm
Material	Laminated plywood, powdercoated steel
Castors	Ø125 mm, two are lockable
Design	Eurobib Direct
Delivered	Flatpacked; needs assembly

- E42162 white frame/white
- E42163 black frame/black
- E42164 white frame/orange
- E42165 white frame/lime
- E42166 black frame/grey
- E42167 black frame/virvarr*

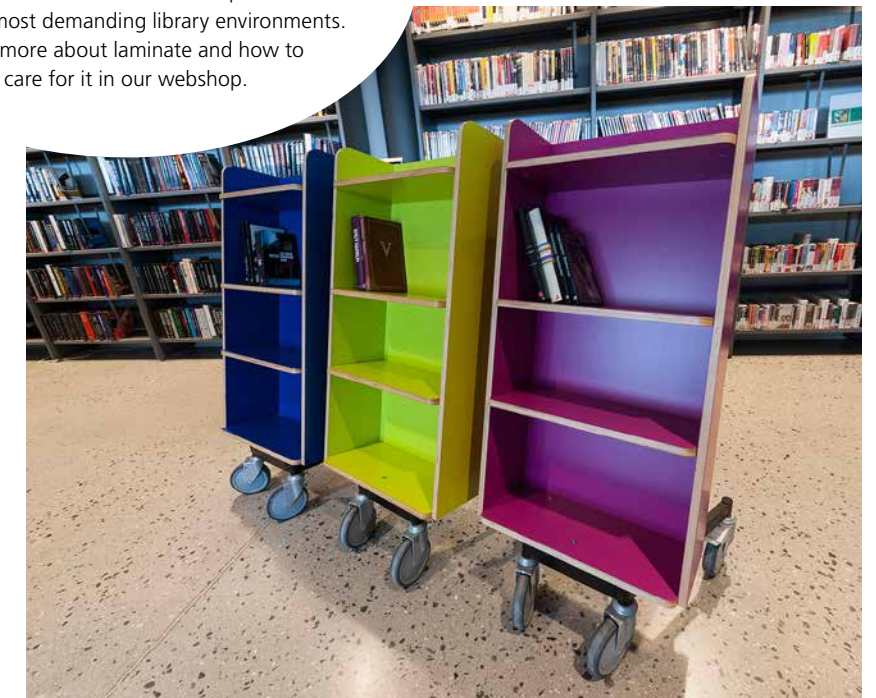


*A whole generation of Swedes have spilled milk on this iconic, speckled grey pattern called Virrvarr (eng. maze), designed by Sigvard Bernadotte.

Read more on wearelibrarypeople.com/virrvarr



Plus design
We are talking laminated plywood with exposed plywood edges, creating a tough, knock-resistant solution which is perfect for even the most demanding library environments. Read more about laminate and how to care for it in our webshop.



Here, the term "standard books" refers to books with a spine width of 30 mm. The capacity of the book trolleys is calculated based on this width.

XL BOOK TROLLEYS

When you want to manage or display large amounts at once!

Gotland XL

Plenty of "vertical" space!

Double-sided trolley with 6 adjustable shelves on each side.

Capacity	240 standard books
Size	W665 x D430 x H1695 mm
Material	Laminated plywood, powdercoated steel
Castors	Ø125 mm, two are lockable
Design	Eurobib Direct
Delivered	Flatpacked; needs assembly

E4570	white frame/white
E4571	black frame/black



E4570

Öland XL

Mobile multi-purpose book trolley

Single-sided trolley with 4 fixed, sloping shelves. Also suitable for larger books and binders.

Capacity	100 standard books / 50 binders
Size	W1010 x D350 x H1480 mm
Material	Laminated plywood, powdercoated steel
Castors	Ø125 mm, two are lockable
Design	Eurobib Direct
Delivered	Flatpacked; needs assembly

E4572	white frame/white
E4573	black frame/black



More specifications on wearelibrarypeople.com



TROLLEYS FOR EVERYONE

Choose between veneered classics or laminated trolleys in our popular Plus Design.



Gotland

Handy, easy to move, spacious

Double-sided trolley with 3 adjustable shelves on each side.

Capacity	160 standard books
Size	W665 x D430 x H1090 mm
Material	Veneered particle board, powdercoated steel
Castors	Ø125 mm, two are lockable
Design	Eurobib Direct
Delivered	Flatpacked; needs assembly

E4611	red frame/beechn
E4612	white frame/beechn
E4618	white frame/birch

Gotland, Plus

Handy, easy to move, spacious

Double-sided. Choose between 2 models. Standard with 3 adjustable shelves on each side or Laptop with a flat top shelf, nonslip rubber mat and 2 adjustable shelves on each side.

Capacity	Standard: 160 standard books Laptop: 120 standard books
Size	W665 x D430 x H1090 mm
Material	Laminated plywood, powdercoated steel
Castors	Ø125 mm, two are lockable
Design	Eurobib Direct
Delivered	Flatpacked; needs assembly

E4613	white frame/white
E4614	black frame/black
E4615	white frame/white (laptop)

Ørestad

Handy, easy to move, easy to grip

Single-sided wagon with 4 sloping shelves, of which 3 are adjustable.

Capacity	65 standard books
Size	W460 x D497 x H1150 mm
Material	Laminated plywood, powdercoated steel
Castors	Ø125 mm, two are lockable
Design	Eurobib Direct
Delivered	Flatpacked; needs assembly

E5065	white frame/white
E5067	white frame/lime
E5068	white frame/grey



Take a look – castors & construction!

Remember that the castors on your trolley may need tightening after a certain period of use (approx. 6 months). We also recommend that you check the castor fittings once a year and tighten as necessary. Keep the tightening tool that is supplied with your book trolley handy.



MULTI-PURPOSE TRANSPORT & BINDER TROLLEYS



E4622



E4625

Ven

All-purpose, spacious trolley
Double-sided trolley with three generously dimensioned flat shelves. Also suitable for larger books and binders.

Capacity	150 standard books
Size	W1010 x D430 x H1090 mm
Material	Veneered particle board or laminated plywood, powdercoated steel
Castors	Ø125 mm, two are lockable
Design	Eurobib Direct
Delivered	Flatpacked; needs assembly

E4601 red frame/beech
E4602 white frame/beech

E4603 white frame/white
E4604 black frame/black
E4605 white frame/orange
E4606 white frame/lime
E4607 white frame/grey



E4601



E4605

E4603

Öland

Compact with generous shelf clearance
Single-sided trolley with three fixed sloping shelves. Also suitable for larger books and binders.

Capacity	75 standard books / 36 binders
Size	W1010 x D350 x H1090 mm
Material	Veneered particle board or laminated plywood, powdercoated steel
Castors	Ø125 mm, two are lockable
Design	Eurobib Direct
Delivered	Flatpacked; needs assembly

E4621 red frame/beech
E4622 white frame/beech

E4625 white frame/white
E4626 black frame/black
E4627 white frame/orange
E4628 white frame/lime
E4629 white frame/grey

METAL BINDER & BOOK TROLLEYS



Selma

Lightweight, handy, all-round trolley
Single-sided trolley with two generous sloping shelves. Ideal for tight aisle spaces. Perfect for binders!

Capacity	26 A4 binders/50 standard books
Size	W981 x D350 x H900 mm
Material	Powdercoated steel
Castors	Ø125 mm, two are lockable
Design	Eva Nyberg for Eurobib Direct
Delivered	Fully assembled (except castors)

E5010 white frame/black shelves
E5011 white aluminium



Larry

Robust trolley with reversible shelves
Single-sided trolley with three sloping, detachable shelves. Place shelves as required using the bearing holes in the frame.

Capacity	50 standard books
Size	W550 x D660 x H1080 mm
Material	Powdercoated steel
Castors	Ø125 mm, two are lockable
Design	Louise Hederström for Eurobib Direct
Delivered	Flatpacked; needs assembly

E4256 white
E4262 black



Flatpacked

Most of our book trolleys are delivered flat packed and require assembly. Standard tools may be required. Assembly instructions are included, and can also be downloaded from our webshop.

More information on wearelibrarypeople.com





SUPREMATISM

There's an art to making good and affordable book trolleys that you can rely on. Take a look at the next page and you'll understand. We're talking about the world's first suprematist book trolley series.

EXTRA ERGONOMIC

Push & Pull are designed in accordance with the Dutch ARBO guidelines for occupational health and safety. Elevated storage reduces wear on back and joints; a welcome transportation tool for books.



Push & Pull Midi / Combi

Easy to work, versatile and ergonomic
Single sided book trolleys with four sloping shelves (two adjustable). Combi has a generous shelf depth that also suits large book formats or binders (if you remove 1 shelf).

Capacity	50 standard books / 36 folios / 18 binders, A4
Size	W500 x D615 x H1330 mm
Material	Laminated or oiled birch plywood, powdercoated steel
Castors	Ø125 mm, all are lockable
Design	Bjarne Hjertvik for Eurobib Direct
Delivered	Flatpacked; needs assembly

Midi (shelf depth 236 mm)

E5001	white frame/white laminate
E5002	white frame/oiled plywood

Combi (shelf depth 280 mm)

E5003	white frame/white laminate
E5004	white frame/oiled plywood



Ergoline

User-friendly, ergonomic
Forward-facing display trolley with three flat shelves. Adjustable middle shelf.

Capacity	45 standard books
Size	W545 x D610 x H1320 mm
Material	Veneered particle board, powdercoated steel
Castors	Ø125 mm, two are lockable
Design	Eurobib Direct
Delivered	Flatpacked; needs assembly

E4010	white frame/beech
-------	-------------------

Push & Pull Expo

Versatile, easy to work display trolley
Single sided display trolley equipped with four shelves with front edge; optional placement and adjustable in depth.

Capacity	40 standard books (face-forward) / 120 Paperback or 225 Manga books (frontstorage)
Size	W973 x D663 x H1330 mm
Material	Laminated or oiled birch plywood, powdercoated steel
Castors	Ø125 mm, all are lockable
Design	Bjarne Hjertvik for Eurobib Direct
Delivered	Flatpacked; needs assembly

E5005	white frame/white laminate
E5006	white frame/oiled plywood



Push & Pull are made of wood from sustainable forestry



More specifications on wearelibrarypeople.com

FORWARD-FACING TROLLEYS

Trolleys designed to provide a good overview of the books you want to manage.
The frame is designed to provide an easy-grip for people of all heights.

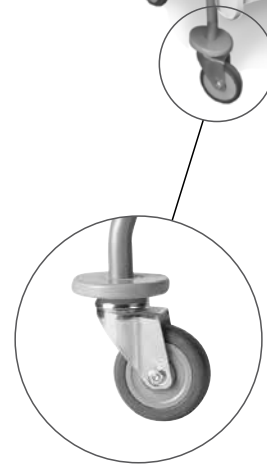


Crossrunner Maxi

Book trolley with four fixed, sloping shelves with generous amount of clearance between shelves to accommodate larger books.

Capacity	70 standard books / 70 folios
Size	W610 x D540 x H1400 mm
Material	Melamincoated particle board, powdercoated steel
Castors	Ø100 mm, not lockable
Design	Schulz Speyer
Delivered	Flatpacked; needs assembly

E4450 red
E4452 white



Impact protection

Crossrunner Mini

Book trolley with three fixed, slightly angled shelves with a generous shelf clearance. Also suitable for binders.

Capacity	60 standard books / 24 binders
Size	W610 x D540 x H1220 mm
Material	Melamincoated particle board, powdercoated steel
Castors	Ø100 mm, not lockable
Design	Schulz Speyer
Delivered	Flatpacked; needs assembly

E4453 red
E4454 white



As hinted by the name, Push & Pull is actually also forward-facing. Read more on p. 59.

More information on wearelibrarypeople.com



Looking for more colours or types of wood?
Contact us, we will be happy to advise you!



E5001



Crossrunner

BOOK RETURN CABINETS

Easily positioned, lockable return cabinet with or without castors for indoor use - and see our popular metal book return cabinet Maya for outdoor use.



WR1

Easily positioned, mobile cabinet
Mobile book return cabinet with a lockable side, for easy access to returned books. Interior equipped with a cushioned tray, and a track that softens the impact of drops.

Capacity	60 standard books
Size	W800 x D455 x H870 mm
Drop	W320 x H70 mm
Material	Melamincoated particle board, book tray in plastic, PE
Castors	Ø75 mm, all are lockable
Design	Schulz Speyer
Delivered	Flatpacked; needs assembly

E5804

Lund

Simple and functional
Lockable book return cabinet.

Capacity	50 standard books
Size	W500 x D400 x H885 mm
Drop	W460 x H75 mm
Material	Veneered particle board, bottom layer in fire retardant bonded foam (40 mm)
Design	Eurobib Direct
Delivered	Flatpacked; needs assembly

E4237	birch
E4232	beech

Bob

Easily positioned and functional
Lockable cabinet equipped with an anti-theft fitting at the bottom. Supplied with adjustable feet, storage bin and icon signs for books and CDs/DVDs. Castors are ordered separately, see accessories.

Capacity	60 standard books
Size	W540 (front) / 310 x D630 x H870 (front) / 760 mm
Drop	W340 x H70 mm
Material	Powdercoated steel
Design	Louise Hederström for Eurobib Direct
Delivered	Fully assembled

E4251	red
E4252	anthracite

Double swivel castors for Bob
E2402 Castor set (Ø50 mm), 4 pcs



Maya

Functional in all types of weather
Robust, lockable powdercoated steel book return for outdoor use. Suitable for libraries with limited opening hours. Equipped with slide and padded bottom storage bin on wheels with handles. The cabinet has space for concrete blocks in the bottom to add extra weight. Or you can bolt the cabinet to the ground.

Capacity	80 standard books
Size	W480 x D600 x H970 mm
Drop	W340 x H70 mm
Material	Powdercoated steel
Design	BS Eurobib
Delivered	Fully assembled

E4253



FURNITURE FOR LEARNING ENVIRONMENTS



More information on wearelibrarypeople.com



LEARNING ENVIRONMENTS FOR YOUNG USERS

Simply put, it is a space for practical, creative expression with focus on curiosity. Cubik is a versatile system for creating spaces designed with straight frames and wall elements.



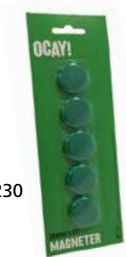
E76228



E76237



E76229



E76230



E3793

Accessories for Cubik

- E76229 Castors (4 pcs)
- E76230 Magnet set (5 pcs)
- E3793 Set of Pens (4 pcs)



E76231

Cubik

Focus on curiosity
Get started with Cubik. Consists of a framework and wall elements made of plywood and of black laminate with writing/magnet function.

Size	W1400 x D1400 x H1400 mm
Material	UV-lacquered birch plywood, laminate boards with writing/magnet function
Design	Bjarne Hjertvik for Eurobib Direct
Delivery	Flatpacked; needs assembly

E76228

Cubik Shelf Set

Display and store picture books
Smart shelves and compartments for young librarians. The shelves and compartments come in two different widths to fit the inside and outside of the rear wall element.

Size	Shelf inside: W578 x D66 mm Shelf outside: W674 x D66 mm Compartment inside: W578 x D184 x H335 mm Compartment outside: W674 x D184 x H335 mm
Material	UV-lacquered birch plywood
Unit	6 shelves / 2 compartments
Delivery	Flatpacked; needs assembly

E76237

Lewis

Driving fun for the littlest ones
Compact book trolley made of birch plywood with two fixed shelves with front edge lip for front display of picture books, for example. The integrated handles are easy for both younger and older children (aged 3-7) to hold onto.

Capacity	50-55 picture books
Size	W470 x D438 x H438 mm
Material	UV-lacquered birch plywood
Castors	Ø50 mm
Delivery	Fully assembled

E76231

My Library Too - the library kiosk

Cubik is shown here set up as a library kiosk – a place for inspiration, playing and learning. Fun-filled learning for the littlest ones: understanding, interpreting and communicating books borrowed. Imagine having the children help you increase book borrowing! Isn't that fabulous?



E76228 + E76237 + E76229



The writing/magnet boards let children communicate their personal experiences and impressions from the world of books: write, draw or display drawings and much more.



E76231



Cubik is made of wood from sustainable forestry

A MEETING PLACE FOR THE YOUNGEST

Create space for practical, creative expression with curiosity in focus. Cubik enables you to get started quickly and easily. In addition to activities to promote reading, they can create a space for theatre and other artistic activities.

My Library Too has been a source of great joy at Väster library in Lund, Sweden.

"The children play enthusiastically out in the library kiosk. They play library, bookshop and school. They have a lot of fun,

and the kiosk is a natural gathering place for the youngest.

They push the little book trolley around and "clean up" the books as they go along (it just seems natural). It's not uncommon to see a parent crawl into the kiosk to sit there and read with their child."

Both the library staff and the children are really enjoying the library's new library kiosk!

Ida-Matilda Carlsson Öiulfstad, Väster Library in Lund



My Art Gallery Too - the artist's studio

Allow children to express themselves and be creative. The easel lets children create masterpieces on their own or with other children. Let children inspire children.



Garbo is made of wood from sustainable forestry



E76232 + E76233



E2938-41

Accessories for Michelangelo

- E76233 Large-size paper (50 sheets)
- E2938-40 Storage boxes
- E2941 Lid for Storage box

Garbo

Stage for young actors

Stage consisting of four sturdy modules and one step of birch plywood. Integrated carrying handles make it easy to take out and put away. The top side of the modules are coated with textured paint; Non-slip surface for secure footing. Naturally with a smart attachment solution so that the modules do not slide apart during the performance. Supplied with adjustable feet.

Size	Modules: W1304 x D652 x H326 mm Step: W652 x D652 x H326 mm
Material	UV-lacquered birch plywood (textured paint top)
Unit	4 modules / 1 step
Delivery	Flatpacked; needs assembly

E76236



E76236

My Theater Too - children's theatre

The stage, the actor and the audience are ready. The play can begin. Standing on stage is a fun way to try and practise various roles, whether we are talking narration, song and music performance or plying in the form of characters. Let the children play and have an outlet for their imagination by practising using their senses and their entire body. All you need is 3.4 m² of space for the stage.



E76234

GET MORE OUT OF CUBIK

Cubik helps you create new spaces for the creative expression of the library's youngest visitors. Let the children try painting on an easel or acting on stage. Check out all the options here (of course, you can also use Cubik to display books that suit the respective activity).



Michelangelo

Easel for young artists

Free-standing double-sided easel on wheels that up to four creative children can use at the same time. Slanted painting surface in laminate boards with writing/magnet function, pad holder, and practical shelf to hold everything you need at your fingertips, such as chalk, brushes and paints. Add to that a generous storage space for art supplies. Rubber mats included for shelf and storage space.

Size	W1326 x D640 x H1425 mm
Material	UV-lacquered birch plywood, laminate boards with writing/magnet function
Castors	Ø50 mm, all castors are lockable
Design	Bjarne Hjertvik for Eurobib Direct
Delivery	Flatpacked; needs assembly

E76232



Harlequin

Mobile dress-up trolley

Compact dress-up trolley for the youngest children to choose costumes and other props from. Fitted with mirrors on the end panels, plus hangers for clothes and shelves for hats, masks, hand puppets and shoes. The shoe shelf at the bottom is fitted with a rubber mat.

Size	W660 x D652 x H1403 mm
Material	UV-lacquered birch plywood, safety glass mirrors
Castors	Ø50 mm, all castors are lockable
Design	Bjarne Hjertvik for Eurobib Direct
Delivery	Flatpacked; needs assembly

E76234



The stage modules can be stored in a stack!

More information on wearelibrarypeople.com





PRIZEWINNING FURNITURE ICON

Puzzle has been part of a number of exhibitions internationally and has also won the prestigious Japanese G-mark Prize in the category Good Design Grand Prize and the Norwegian Design Prize Designers Saturday.

Puzzle and its puzzle-like qualities connected to the child's motoric development through play wins attention and has, among others, been purchased by Lego.



Puzzle

Prizewinning furniture icon for children
Puzzle is just as much a range of furniture as a play tool designed for children and on their terms. The shape is just as simple as it is genius, where both the element and the construction form a table and stools. Children come and go, look and search around, play individually or in a group or gather together to hear a story read aloud. Activities that demand as well as create space for them.

Size	Table: W900 x D900 x H460 mm Stool: Ø350 x H228 mm
Material	Veneered birch plywood
Design	Birgitte Borup and Carsten Becker for Eurobib Direct
Unit	1 table / 4 stools
Delivery	Flatpacked; needs assembly

E15139



Accessories for Puzzle Children's group

E151391 Set of two stools

READING HUT

Reading hut gives children opportunities to live other worlds; pretend to be somewhere else, browse through books or just chill.

Reading Hut

Reading room for young library users
A multifunctional room in the shape of an African hut. The horizontal elements tie the structure together and provide ample space for picture books on three levels. A space that offers privacy, free view (or insight) with integrated shelves to display or dispose books and much more. Everything accessible from both sides of the shelves. In addition there are 3 compartments for display or storing. Equipped with floor protectors.

Capacity	30 picture books per shelf
Size	Ø2400 x H1500 mm
Material	UV-lacquered birch plywood
Design	Bjarne Hjertvik for Eurobib Direct
Delivery	Flatpacked; needs assembly

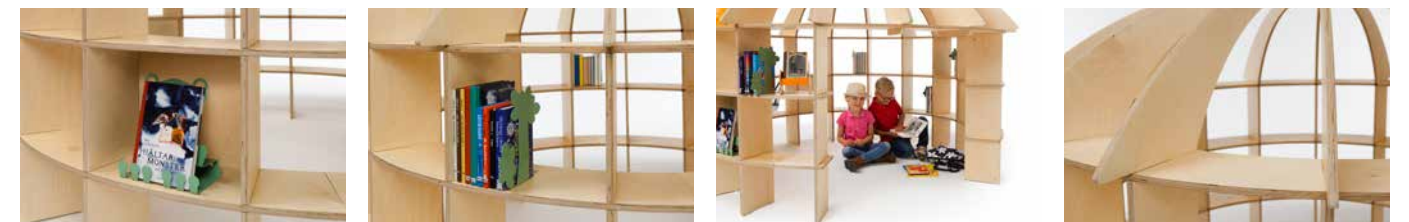
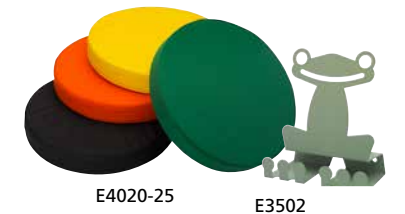
E76100

New!



Tips for Reading Hut

- E3394 Lion book display
- E3502 Frog book display
- E3819 Twigs book support
- E4020-25 Cushions



Wildlife

A space for the youngest readers to relax in after a trip to the savannah in search of exciting picture books. Reading hut is an excellent addition to the Wildlife collection. Check out all the fantastic picture book browsers in the form of wild animals.

More information on wearelibrarypeople.com/wildlife



WE
ARE
LIBRARY
PEOPLE®

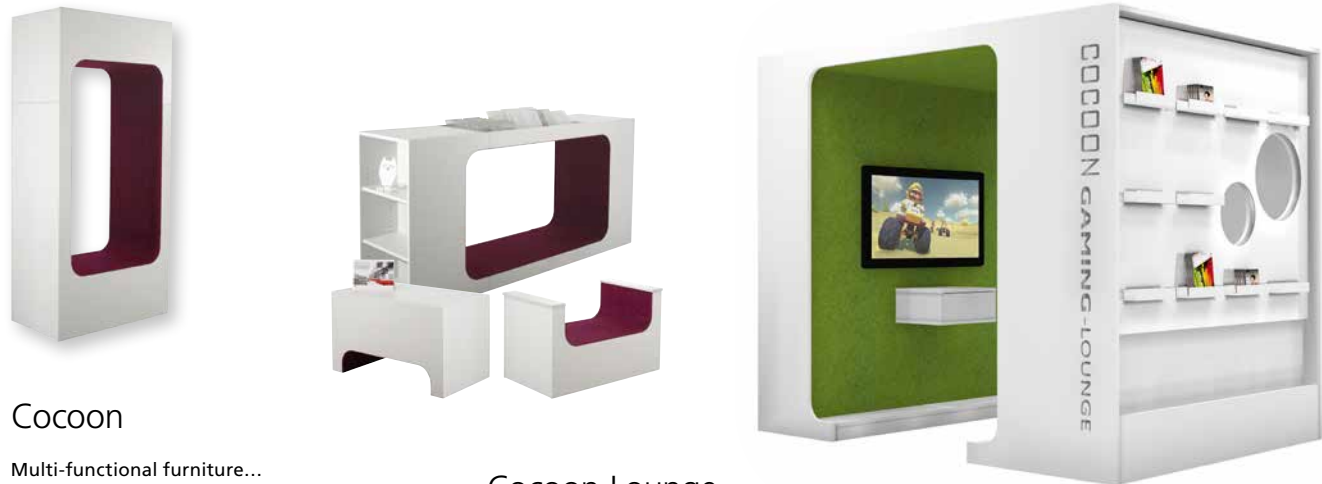




Contact us
for prices

ROOM IN A ROOM

Do visitors become more creative or focused when the interior design solutions are inspiring and different?
Not necessarily. The optimal solution is created based on what you want to communicate and where each solution clearly says "Space for visitors on the visitors' own terms".



Cocoon

Multi-functional furniture...

The Cocoon series provides seating and storage solution for any library zone. The modules can be used horizontally or vertically and combines in a variety of ways.

Size	Vertical: W970 x D540 x H2050 mm Horizontal: W2050 x D540 x H970 mm
Material	Melaminecoated particle board, felt
Design	Anthony Salaa for Schulz Speyer

Cocoon Lounge

Creates a 'room within a room'. Ideal zoning solution for kids, students and gamers alike. Graphics are additional.

Size	W2500 x D1800 x H2050 mm
Material	Melaminecoated particle board, felt
Design	Tanja Fährndrich for Schulz Speyer

Contact us by email export@wearelibrarypeople.com for more information about design and prices.



More information on wearelibrarypeople.com/cocoon



COCOON LOUNGE AS CENTRE OF ATTENTION

The City Library in Werne, Germany recently put focus on young people as a target group. The result was a chill area called RePlay (Read and Play).

"Since the youth area is directly related to the adult area we wanted to create a peaceful coexistence. We have divided the two areas with existing groups of DVDs, CDs and learning aids. In addition we have equipped the areas with flexible seating

and 2 consoles. To separate them, we have made the Cocoon Lounge the center of RePlay. It is visually a real highlight for young and old.

In the Cocoon Lounge is an Xbox, which is very popular. Up to 4 young people can play at the same time. The closed character of the Cocoon Gaming Lounge takes away some of the noise, but since it is still open on two sides, one cannot expect

absolute quiet. As a rule, however, if necessary with a nice admonition on our part, the noise level is limited and young people and adults get on well with each other.

All in all, the Cocoon Gaming Lounge for the City Library of Werne was a worthwhile purchase".

Marion Gloger,
City Library of Werne, Germany



HANG YOUR COAT - TIME TO PLAY!

"Pointers" don't always help when there is so much else to capture attention. Here is a selection of playful coat stands that say directly to younger visitors "Please, use me!".



E23444

Paradise Tree

Playful, turnable coat stand

A fairy tale tree to gather around. A fun and attractive coat stand in every colour of the rainbow designed for young children. Allows children to keep their outdoor wear tidy in the reading corner. Contains five sections. The top parts can be turned. Robust and stable construction.

Size	Ø675/550 (tot) x H1890 mm
Material	Rotation moulded plastic, PE, stand and base in galvanised steel
Design	Oiva Toikka
Delivery	Made to order

E23444



E23534 + E23538



E23525

E23527

E23523

E23524

Godot

Waiting for Godot

Godot is a coat hanger that welcomes visitors to an incredible world. Fitted with six "branches" with "buds" and a practical storagepocket in the middle of the trunk. Ideal for indoor and outdoor use. Buds in other colours can be ordered separately to express the season, placement, theme, etc.

Size	W430 x D400 x H1760 mm
Material	Rotationally moulded plastic, PE
Design	Alberto Brogliato
Delivery	Made to order

E23534	white/white buds
E23535	grey/grey buds

Buds for Godot

E23536	white, 6 pcs
E23537	red, 6 pcs
E23538	grey, 6 pcs
E23539	green, 6 pcs
E23540	black, 6 pcs

Gumball

Playful seating

Shaped like a soft, already "used" bean bag, the Gumball armchair offers the perfect place to get comfortable with friends or a good book. Suitable for both indoor and outdoor use.

Size	Senior: W920 x D860 x H650 mm Junior: W700 x D640 x H490 mm
Material	Rotationally moulded plastic, PE
Design	Alberto Brogliato
Delivery	Made to order

E23521	Senior, white
E23522	Senior, black

E23523	Junior, white
E23524	Junior, green
E23525	Junior, yellow
E23555	Junior, fuchsia

CHILDREN'S FURNITURE



Gumball

Playful sofa

A three-seater sofa shaped like a "used" bean bag. The material is hard plastic, which makes it easy to get up from the sofa, and easy to keep clean. Suitable for both indoor and outdoor use.

Size	W1220 x D650 x H490 mm
Material	Rotationally moulded plastic, PE
Design	Alberto Brogliato
Delivery	Made to order

E23557

Linus

Alma's little helpers! Simple, durable, white, unobtrusive children's tables.

Size	S: W750 x D550 x H500 mm M: W750 x D750 x H500 mm L: W1200 x D750 x H500 mm
Material	Legs made from glass fibre reinforced plastic, PP, table top in MDF with polymeric surface

Design	Javier Mariscal
Delivery	Made to order

E23322	S
E23323	M
E23324	L



T-ball

Playful, multi-functional furniture

Storage, display or table; combines beautifully with the Gumball armchair.

Size	Ø770 x H270 mm
Material	Rotationally moulded plastic, PE
Design	Alberto Brogliato
Delivery	Made to order

E2356	white/white top plate
E2357	white/green top plate
E2358	white/yellow top plate
E2359	white/blue top plate

Alma

A light, stackable children's chair with a unique seatback. The back is decorated with branches, leaves and even little birds here and there. Suitable for both indoor and outdoor use.

Size	W392 x D400 x H580 mm
Material	Glass fibre reinforced plastic, PP
Design	Javier Mariscal
Unit	4 pcs
Delivery	Made to order

E23314	brown, 4 pcs
E23315	green, 4 pcs
E23316	white, 4 pcs
E23317	orange, pcs



Large range of book browsers

Don't miss our large range of picture book browsers for the children's section. We have a whole chapter devoted to them; see p. 39-50.

See all picture book browsers on wearelibrarypeople.com/browsers



See all children's furniture on wearelibrarypeople.com/children



TIME FOR STORY TELLING

Create playful space for children – a fun and exciting start on the journey into the wonderful world of experiences, adventures, and new places that books have to offer.



Luna

For active listening and relaxation

Listen to an audio book or to music (or simply enjoy the silence). You don't need any headphones; the audio is just there. An audio/chair combination with a design that clearly says "Do not disturb!". The armchair is equipped with integrated speakers and jackstick. Simply connect to a stereo, iPad, computer, or some other audio source. Everything can be connected! Cable to the "audio device" with jackstick socket not included.

Size	W800 x D850 x H1475 mm
Material	Upholstered timber shell in Gabriel Fame fabric, steel base with EPC finish
Connection	Input voltage 90-264 V AC (47-63 Hz) With C14 EN60320-1 connection. (3 m EU standard cable included) Power consumption: 40 W Max
Sound	Speakers: 30 W RMS (2 x 15 W)
Design	Mårten Cyrén & Bertil Harström for Eurobib Direct
Delivery	Made to order

E37085 any Fame colour



Cushions

Handy for children's story time. Neat, comfortable cushions in happy colours. Ideal on floor, benches and so forth. Cushion trolley is ordered separately, see accessories.

Size	Thin: Ø350 x H50 mm Thick: Ø350 x H100 mm
Material	Solid bonded foam, cotton/polyester fabric
Other	Washable fabric (60°C)

E4020	thin, green
E4021	thin, yellow
E4022	thin, orange
E4025	thin, anthracite
E4029	thick, black
E4030	thick, red
E4031	thick, blue

Accessories for cushions

E97551 Cushion trolley



Proust

An armchair for storytelling

A generous armchair with guaranteed comfort for adults to enjoy reading alone, or to read to young children. Easy maintenance, also suitable for outdoor use.

Size	W1040 x D900 x H1050 mm
Material	Rotationally moulded plastic, PE
Design	Alessandro Mendini
Delivery	Made to order

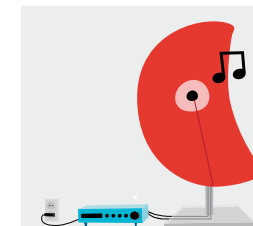
E23343	white
E23349	orange
E23350	red
E23351	blue
E23360	black
E23372	multicolour

ChillBill™

Comfortable, eco-friendly sitting bags (environmentally neutral filling) with good comfort and high durability. And no need for refill!

Size	S: Ø900 mm L: Ø1200 mm
Material	Washable nylon, recycled furniture foam
Design	Tom Madslangrud

E37213	S, orange
E37214	S, lime
E37215	S, grey
E37210	L, orange
E37211	L, lime
E37212	L, grey



Sound-shielding function

Luna's characteristic moon shape has an important sound-shielding function. No disturbing noise in or out. The sound stays in the armchair and does not disturb anyone else. A "quiet" space for visitors looking to relax or an experience area for those seeking inspiration from audio books or music. Ideal for libraries or other learning environments.



See all Fame colours on wearelibrarypeople.com/luna

ALL YOU NEED FOR YOUR CHILDREN'S ZONE



Little Big Chair

A chair to grow with
The chair grows with the child thanks to the simple solution, allowing it to be regulated in three different heights.
Suitable for children from 2 to 6 years.

Size	H465-555 mm
Material	Plastic, PE, legs in natural ash wood
Design	Big game
Delivery	Made to order

E76241	blue
E76242	orange
E76243	white



Happy Bird Junior

A happy bird for the smaller children
The little sister to Happy Bird? Fun seating furniture or play tool for the smaller child. Also suited for outdoor use.

Size	W380 x D465 x H445
Material	Rotationally moulded plastic, PE
Design	Eero Aarnio
Delivery	Made to order

E23440	yellow/yellow legs
E23441	white/yellow legs



Happy Bird

A happy bird to keep you company
Happy Bird is the adorable companion that invites children to the library to point out the children's zone, for small children to sit on or just for fun!

Size	W570 x D700 x H665
Material	Rotationally molded plastic, PE, legs in natural ash wood
Design	Eero Aarnio
Delivery	Made to order

E23357	white
E23358	orange
E23359	yellow

Le Chien Savant

Playful reading furniture
Let the youngest sit on this fun piece of furniture. Works as both a seat and a small table.

Size	W350 x D795 x H660 mm
Material	Rotationally moulded plastic, PE
Design	Philippe Starck
Delivery	Made to order

E23352	green
E23353	yellow
E23354	rose
E23355	orange



PLAY AND COLOURFUL

Furniture that lets children know where they can spend time on their own terms.



Julian

Playful stool
Julian is a stool that looks like it comes from a 3D comic. A playful stool for the little ones.

Size	W350 x D480 x H550 mm
Material	Rotationally moulded plastic, PE
Design	Javier Mariscal
Unit	2 pcs
Delivery	Made to order

E23270	white
E23271	red
E23273	yellow
E23274	green



Puppy

Playful company
Puppy, this little dog can't speak, see, or jump and it doesn't even have ears, but it does exactly what you want it to do. Playful company for the youngest visitors to the world of books.

Size	S: W425 x D260 x H345 mm M: W565 x D340 x H450 mm L: W695 x D420 x H555 mm
Material	Rotationally moulded plastic, PE
Design	Eero Aarnio
Delivery	Made to order

E23268	S, green
E23269	S, white
E23306	S, orange

E23266	M, green
E23267	M, white
E23307	M, orange

E23264	L, green
E23265	L, white
E23308	L, orange



Trioli

Colourful, multi functional chair
Trioli is the name of a colourful series of "Upside Down Chairs" for children, big and small. Let the children decide if they want to sit high, low or straddle!

Size	W496 x D450 x H580 mm
Material	Rotationally moulded plastic, PE
Design	Eero Aarnio
Unit	1 pc
Delivery	Made to order

E23276	red
E23277	blue
E23278	yellow

Rocky

The most popular children's toy throughout history – and still is!
Let the kids grab the reins and ride off towards new adventures in Fantasyland. Rocky, the obedient rocking horse obeys the children's every command, quietly and safely. The rocking horse is mounted on a stable platform without runners, eliminating the risk of hands and feet getting caught. Giddy-up!

Size	W750 x D505 x H715 mm
Material	Rotationally moulded plastic, PE
Design	Marc Newson
Delivery	Made to order

E23346	brown
E23347	white
E23348	black



All you need for your children's zone

Furniture that spreads joy among both children and adults – bringing out the child in all of us. More happy libraries!

See all products on wearelibrarypeople.com/children



GAMING WALL

Functional plug and play furniture ideal for creating gaming zones in the library.

New!



Gaming Wall

Ideal for creating gaming zones

Gaming Wall is equipped with smart LED light around the panel and in the gaming box and has colour changing and dimmable functions to attract the users. All wiring is hidden behind the panels and the gaming equipment is stored safely in the gaming box.

Includes a lockable gaming box, two small display cubes, angle-adjustable screen mount, and self-adhesive graphics 'Gaming Wall'. Screen and gaming console is not included.

The free standing double sided Gaming Wall can be used as Gaming Wall on one side and Display Wall on the other side for acrylic displays.

Size	Gaming Wall, freestanding: W1150 x D80 x H1939 mm + soccle plate: W1100 x D780 mm Gaming Wall, wall hung: W1150 x D80 x H1756 mm
Material	Melamincoated particle board with ABS edges (the freestanding version has metal legs)
Other	25 kg maximal load on screen mount
Design	Schulz Speyer
Delivery	Flatpacked; needs assembly

E21300	freestanding
E21310	wall hung

Accessories for Gaming Wall, freestanding

E34460	Display holder
--------	----------------



E21300 (back side) + E34460



WORK & SEARCH STATIONS



More specifications on wearelibrarypeople.com/gamingwall



Info Pod



Inform



Concertina



Inform

THE FIRST ENCOUNTER...

The first encounter (or the first impression for that matter) can be crucial. Whether we're talking about a fully-staffed, reduce-staffed, or unstaffed library, your visitors should not only feel welcome but also be able to get their bearings quickly.

Where can they get personal assistance or how can they help themselves? Questions that your visitors should be able to have answered when they step into the entrance zone. Planning and designing entrance zones with the help of various interior design solutions may be the answer. Here, we present some options for taking good care of your visitors – right from the first encounter.

wearelibrarypeople.com/entrance

MAKE YOUR VISITORS FEEL INVITED

We have more to offer. Everything you need to make things easier for your visitors. For more products that are perfect for your entrance zone, please visit wearelibrarypeople.com/entrance



Eco-labelled carrier bag

A bag with a meow and a cluck cluck
This durable and Eco-labelled carrier bag is made from a water resistant material and can be used over and over again. Its slightly longer handles also make it easier to carry both by the hand or over the shoulder.

Size	W350 x H350 mm Bag: 120 mm
Material	Plastic, PP
Unit	100 pcs
Motif	Sven Nordqvist for Eurobib Direct

E2966



Digital optical counter

Get information on the number of visitors
This is a small and hassle-free optical counter. The counter is reset to zero with a key. Delivered without delay function. Equipped with lithium battery that last approx. 7 years.

Connection	1-phase 220 V outlet EU
Range	Up to 5 meters

E2082



Carrier bags

We love libraries!
To facilitate library visits, we have sourced environmentally friendly, plastic carrier bags with fun and inspiring designs.

Size	W400 x H450 mm Bag: 100 mm
Material	Plastic, PE
Unit	500 pcs

E2868	Book
E2924	Fill me up
E2956	Elvis
E2957	Sweet reading
E56827	Mother Mu
E56829	We love libraries!

Please note!
The plastic bag has no holes and is dangerous when used as a toy (risk of suffocation).



Basket

Simple, light basket.

Size	W450 x D300 x H210 mm
Material	Plastic, PP

E2815	black
E2817	green
E2818	red

Basket with wheels

An easily manoeuvred basket with handle to lift or pull behind you.

Size	W360 x D610 x H370 mm
Material	Plastic, PE

E4259



INFO PODS

Smaller sized counters in a clean and functional design. Height adjustable (electrical). Ideal for large libraries as information desks or search stations; and/or for school libraries as reception desks.



Cable lead-throughs



Operating panel

Info Pod

Adjustable information desk
Fitted with smart cable lead-throughs in the work-tops. Includes adjustable feet and castors.

Size	W1200 x D765 x H690-1170 mm
Material	Laminated plywood, powdercoated steel
Design	Lykke Jørgin & Camilla Larsen for Eurobib Direct
Delivered	Fully assembled

- E4383 white/dark grey
- E4384 light grey/dark grey

Info Pod, LED

Make your visitors feel enlightened!
Information desk equipped with LED lighting (placed under the "skirt"). Fitted with smart cable lead-throughs in the work-tops. Includes adjustable feet and castors.

Size	W1200 x D765 x H690-1170 mm
Material	Laminated plywood, powdercoated steel
Design	Lykke Jørgin & Camilla Larsen for Eurobib Direct
Delivered	Fully assembled

- E4386 white/dark grey
- E4390 light grey/dark grey

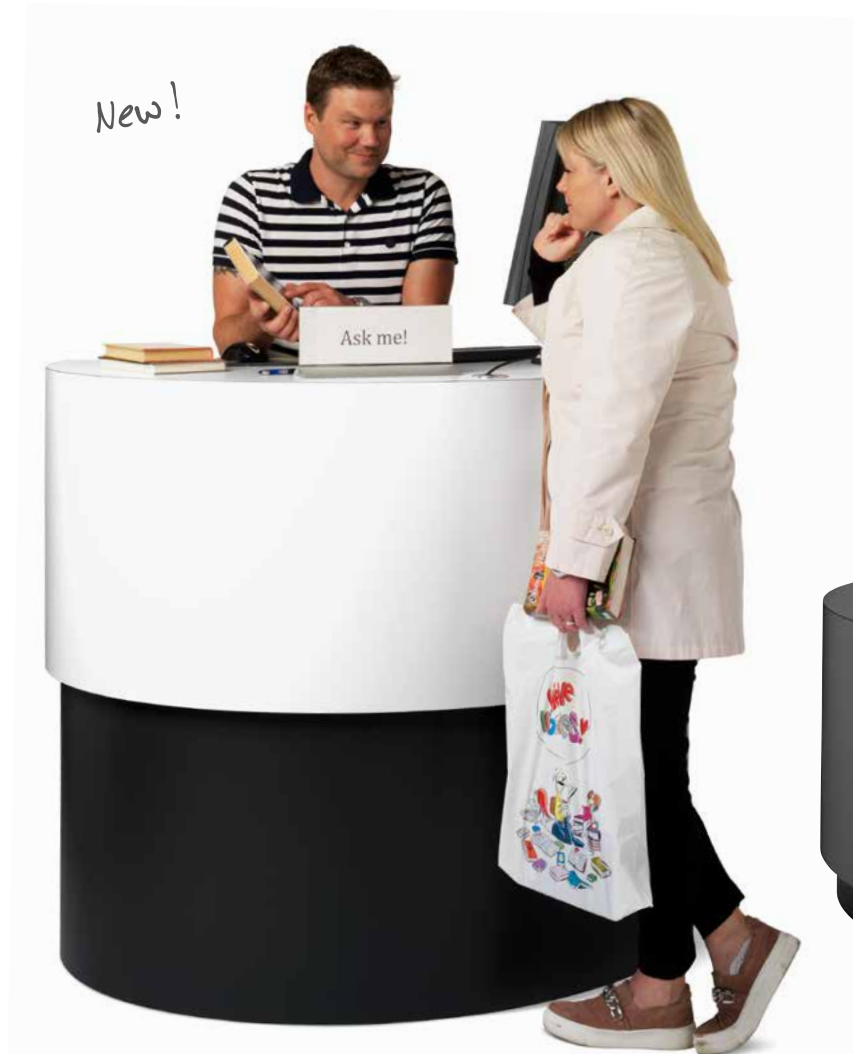


E4386



INFO POD XL

Our popular Info Pod in a larger, more generous format.



Info Pod XL

Adjustable information desk
Info Pod with a more generous work surface. Fitted with smart cable lead-throughs in the work-tops. Includes adjustable feet and castors.

Size	W1400 x D765 x H690-1170 mm
Material	Laminated plywood, powdercoated steel
Design	Lykke Jørgin & Camilla Larsen for Eurobib Direct
Delivered	Fully assembled

- E4690 white/dark grey
- E4691 light grey/dark grey



If you need to move your Info Pod

Info Pods (except those with recessed front) are delivered assembled with adjustable feet and wheels (limited mobility). Retract the feet so that the wheels come into contact with the floor.

More information on wearelibrarypeople.com



Looking for more colours or wood types?

Our Customer Service can guide you to current websites based on who supplies the laminate so you can choose a colour that suits your needs. For example, you might want an Info Pod in oak veneer. Prices may vary depending on the material, but the delivery time is usually about 6-8 working weeks from the date you place your order.

LET YOUR VISITORS GET A LITTLE CLOSER!

Help your visitors in a welcoming and dignified manner.
We can all improve accessibility (regardless of whether your visitors use a wheelchair or a rollator)!



Info Pod, recessed front

Think accessibility!
Ideal for both wheelchair users (low position) and rollator users (high position). Equipped with a support plate in the base to ensure stability (adjustable feet and transport wheels not included).

Size	W1200 x D770 x H690-1170 mm
Material	Laminated plywood, powdercoated steel stand and steel support plate
Design	Lykke Jørgin & Camilla Larsen for Eurobib Direct
Delivered	Fully assembled

- E4683 white/dark grey
- E4684 light grey/dark grey



“Our new adjustable Info Pod with recessed front is a great help to our visitors as well as us staff. It facilitates our work and our interactions with all of our visitors. The counter makes it possible for visitors to get closer with bulky bags, and is also a help for visitors who use a wheelchair or rollator. It feels great to be able to help increase accessibility at the library.”

*Carina Bonde and Maria Nilsson,
Jonstorp library,
Höganäs Municipality,
Sweden*

FLATLINE SEARCH STATIONS

More information on wearelibrarypeople.com/searchstations



Flatline Search Station

Neat, functional and stable
Popular search stations for either standing or sitting. Cable covers included.

Size	Standing: W630 x D590 x H1065 mm Sitting: W630 x D590 x H820 mm
Material	Powdercoated steel, stainless steel, melaminecoated particle board
Design	Schulz Speyer
Delivered	Flatpacked; needs assembly

E3711 standing
E3712 sitting



Flatline Search Station, Box

Wall mounted search station
Comes with lockable CPU case.

Size	W535 x D520 x H638 mm
Material	Melaminecoated particle board, powdercoated steel
Design	Schulz Speyer
Delivered	Flatpacked; needs assembly

E3718



Flatline Search Station, Elektro

Choose the required working height!
Adjustable height (incl. cover plate; protection of control box and cables). PVC-free lifting column and PIEZO™ anti-collision technology.

Size	W630 x D590 x H630-1292 mm
Material	Powdercoated steel, stainless steel, melaminecoated particle board
Design	Schulz Speyer
Delivered	Flatpacked; needs assembly

E3713



Accessories for Flatline Search Station

E3714 CPU console
E3715 CPU case
E3716 Monitor bracket



Flatline Search Station, Slim

Simple and space saving
Wall-mounted search station that does not need a lot of space.

Size	W535 x D520 x H250 mm
Material	Melaminecoated particle board
Design	Schulz Speyer
Delivered	Flatpacked; needs assembly

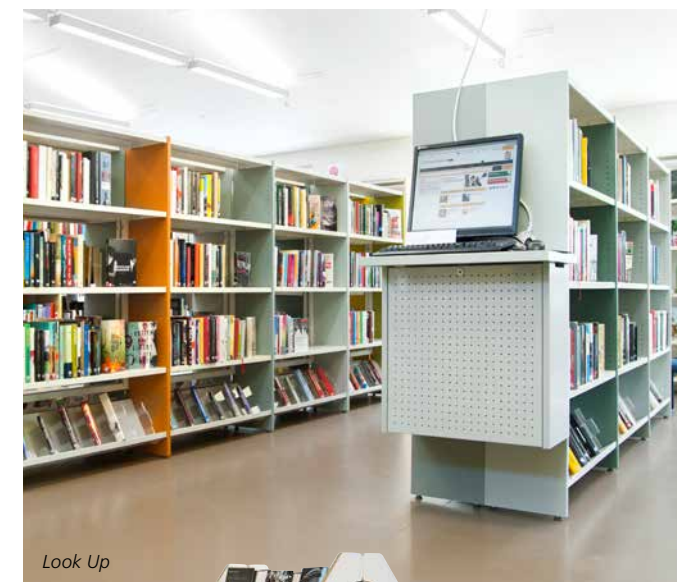
E3719



Classic Line



Flatline



Look Up



Inform



Showalot

LET LIBRARY USERS TAKE RESPONSIBILITY AND HELP THEMSELVES

Nowadays, most libraries have self-service stations for different purposes, without you having to provide assistance. These stations are usually located near entrances and exits to make it easier for both visitors and staff (in case assistance is needed).

Do you need help to get inspired?

Contact us by email: export@wearelibrarypeople.com
We'll be happy to give you some advice!

More specifications on wearelibrarypeople.com





E3864



E3862



E3865

E3863

E3866



E3862

Tablet Holders

Safe way of showing the way with your tablet
Fit tablets in dimensions from 7" up to 13" which are locked into the holder fittings, making it impossible to remove. Choose horizontal or vertical placement (adjustable in 360°) and adjust for the best reading angle.

- E3862 desk version
- E3863 desk mounted arm
- E3864 floor stand
- E3865 wall hung
- E3866 wall mounted arm

MoveIT

Small, light and versatile
Smart table in handy format, ideal for laptops. Adjustable height; fixed manually with a simple grip. Sloping desk plate with easy to grip function making the table easy to move.

Size	W420 x D520 x H990 mm
Material	Powdercoated metal, rubber mat, laminated plywood
Castors	Ø80/40 mm
Design	Tom Stepp for Eurobib Direct
Delivered	Flatpacked; needs assembly

E4047



E4047



Prevent noise

Silent Socks are an ingenious solution to an age-old problem: chair legs that cause annoying scraping noise and scratches and marks on the floor.

silent socks 
wearelibrarypeople.com/
silent-socks



SHELVING SYSTEMS & ACCESSORIES





60/30 Classic



60/30 Round



60/30 Classic

**WE
ARE
LIBRARY
PEOPLE®**



60/30 Classic



Contact us
for prices

STEEL SHELVING

The 60/30 Classic Steel Shelving System is a standalone shelving system and is the culmination of years of experience and success. Its modular structure and width of bays ensures ideal room utilisation through relevant functions. The flexibility of the system paves the way for a rich variety of individual solutions.



60/30 Classic Steel Shelving comes as single-sided, doublesided, round and wall-mounted options; with end panels in different materials; shelves for various purposes; and a wide range of smart accessories which create unprecedented possibilities.



The 60/30 collection, in addition to the shelving system, consists of a number of additional products to give the interior design a uniform expression. Contact us for information about 60/30 book trolley and 60/30 Expo.



60/30 Classic Steel Shelving System

- Dimensions (mm)**
- Heights: 1220 / 1520 / 1820 / 2120
 - Widths: 750 / 900 / 1000
 - Depths: 225 / 250 / 300 / 400

- Material**
- 60 x 30 mm rectangular steel tube

- End panels**
- Wooden, perforated steel or glass
 - Wooden slat end panels

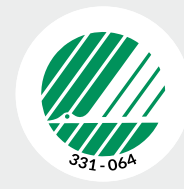
- Back panels**
- Wooden or as pinboard with fabric

- Shelves**
- Horizontal or sloping
 - Wooden or steel
 - With or without back edge
 - Top shelf with or without sign profile

- Colours**
- The steel parts can be powdercoated in the colour of your choice
 - The wooden parts can be delivered in different wooden veneers or painted in the NCS colour of your choice

- Functions**
- Periodicals display
 - Storage and/or display of books, periodicals and other media
 - Lockers, workstations, seating
 - Possibility for integration of audio-visual equipment

- Accessories**
- Castors, signage, book supports, displays, lighting, etc.



Nordic Eco Label

All steel parts in our range meet the criteria for Eco Label, Svanen. Sustainable, safe and environmentally friendly.

See all functions and accessories online





Contact us
for prices

STEEL SHELVING

The Uniflex, Quadra and Rondea Steel shelving system offer a wide range of possibilities in your library!
The standalone shelving systems with different frame designs and numerous shelves and functions allow for individual library design and are especially suited for use in high volume libraries as well as in public and school libraries.



Uniflex



Rondea



Quadra

Uniflex, Quadra and Rondea

Dimensions (mm)

- Heights: 1100 / 1500 / 1750 / 1860 / 2050 / 2250 / 2575
- Widths: 500 / 750 / 900 / 1000
- Depths: 250 / 300 / 350

Material

- Uniflex: 30 x 30 mm square steel tubing
- Quadra: 30 x 30 mm square steel tubing
- Rondea: Ø28 mm round steel tubing

End panels

- Uniflex: Wooden, perforated steel or safety/acrylic glass
- Quadra/Rondea: Perforated steel

Shelves

- Horizontal and corner
- Brackets for sloping shelves
- Wooden or steel
- With or without back edge
- With or without kick plate (only Uniflex)
- With steel or wooden top shelf (only Uniflex)

Colours and surfaces

- The steel parts can be powdercoated according to our general colour range. Other colours are available upon request
- The wooden parts can be delivered in our standard colour range of melamin or in veneer. Other surfaces, veneers and colours are available upon request

Functions

- Periodicals display
- Storage and/or display of books, periodicals and other media
- Cabinets, doors, work stations, etc

Accessories

- Castors, signage, book supports, displays, lighting, etc.



Quadra



Uniflex



Uniflex



Rondea



Certifications

Metal parts are lacquered according to DIN 50942 with a particularly resistant, environmentally friendly, stove-enamel powder coating. Most of the metal fittings are chrome-plated or galvanized and therefore have long-term corrosion protection. Wooden surfaces have an environmentally friendly lacquering or plastic coating.

See all functions and accessories online



STEEL SHELVING ACCESSORIES

Here you can find a selection of smart magnetic accessories in small format. All you need to facilitate your work and help your visitors find what they are looking for.



Magnetic Frames

Plus, A4
Magnetic frame with magnetic edges on the back side for placement on shelf end panels of metal, whiteboards, etc.

Size	A4
Material	Plastic with magnetic frame
Unit	2 pcs

- E3774 black
- E3775 silver



Accessories for Magnetic label strips

- E2034 Marker pen set
- E3347 Label maker
- E3344 Marking tape

Magnetic strip

Self-adhesive
Ideal for fastening to the back of an object to give it magnetic properties. Easy to cut to the required length. Can be used on paper, chalkboards etc.

Size	W20 mm x L10 m
Thickness	0.7 mm

E3337



Magnetic Label Strip

Suitable for steel plate shelves with a front list of 25 mm. Cut to required length. Blank paper label supplied.

Size	L1000 mm
Material	Plastic with magnetic back

E3335

Magnet set

Practical accessory so that you can put up drawings, etc.

Size	Ø30 mm
Unit	5 pcs

E76230

Magnetic Label Strip

Clear, easy-to-use and practical labelling for steel shelves, end panels or display stands. Write directly on the strip with a marker pen or use marking tape. Easy to cut the required length.

Size	W20 mm x L10 m
Material	Plastic-coated ferrite

- E3336 white
- E3341 black

BOOK SUPPORTS



Regular

Our bestseller of all times
Functional book support in a range of colours.

Size	W/D150 x H170 mm
Material	Powdercoated steel
Unit	10 pcs

- E3171 grey
- E3172 blue
- E3242 red
- E3173 black
- E3174 white

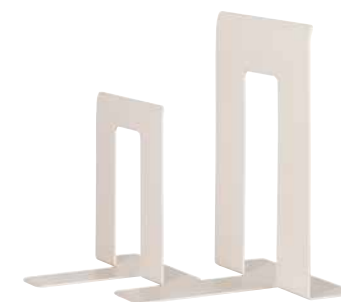


Clip-on

Easy fix
Practical book support suitable for shelf thicknesses of max. 22 mm.

Size	D140 x H190 mm
Material	Powdercoated steel
Unit	10 pcs

- E3325 left
- E3326 right



Cecilia

Sturdy with easy-grip
Practical book support in sturdy metal. Available in two sizes, S and L.

Size	S: W120 x H150 mm L: W150 x H220 mm
Material	Powdercoated steel
Unit	10 pcs

- E3176 S
- E3177 L



XL

For the really big books
Practical bookend in a larger size. Ideal for folio-size books.

Size	W/D150 x H220 mm
Material	Powdercoated steel
Unit	1 pc

- E3178 white
- E3179 grey



PS

Lightweight, easy-grip
Book support in strong plastic, fitted with non-slip tape.

Size	W140 x H215 mm
Material	Plastic, PS
Unit	10 pcs

- E3218 transparent, grey
- E3219 transparent, clear
- E3221 light grey



E3278

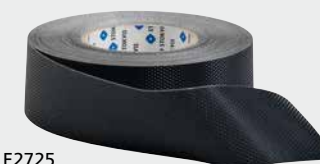
E3277 + E3335

Stopper

Multifunctional front lip
Practical book support with front lip (stopper); holds the book support in place while the lip can be used for signs/labels.

Size	W125 x H170 mm Lip: D130 x H25 mm
Material	Powdercoated steel
Unit	10 pcs

- E3276 grey, right
- E3277 white, right
- E3278 grey, left
- E3279 white, left



E2725

Non-skid tape

Apply on the bottom of products, for example book supports, to prevent them from sliding.

More information on wearelibrarypeople.com/booksupports





Contact us
for prices

WOODEN SHELVING

Our classic wooden shelving system with pronounced wooden feel and modern, Scandinavian look offers one of the most functional and flexible solutions on the market.



Softline

Slimline

Frontline

Softline, Slimline and Frontline

Dimensions (mm)

- Heights: 920/1220/1520/1820/2120
- Widths: 750/900/100
- Depths: 250/300/400

Material

- Painted MDF/veneered particleboard

End panels

- Wooden
- Wooden slat

Back

- Steel frame or wooden back panel

Shelves

- Horizontal or sloping
- Wooden or steel
- With or without back edge
- Top shelf with or without sign profile

Colours

- The steel parts can be powdercoated in the colour of your choice
- The wooden parts can be delivered in different wooden veneers or painted in the NCS colour of your choice

Ratio

Dimensions (mm)

- Heights: 1096/1512/1768/2056/2248
- Widths: 500/750/900/1000
- Depths: 250/300/350

Material

- Veneered/melamine coated particleboard

End panels

- Wooden
- Additional end panels in perforated steel

Back

- Diagonal traverse, steel frame or wooden back panel

Shelves

- Horizontal and sloping
- Wooden or steel
- With or without back edge
- Top shelf with or without sign profile
- Bottom shelf with or without kickplate

Colours and surfaces

- The steel parts can be powdercoated according to our general colour range. Other colours are available upon request
- The wooden parts can be delivered in our standard colour range of melamin or in veneer. Other surfaces, veneers and colours are available upon request



Softline

Slimline

Frontline



Ratio



Ratio



Frontline



Softline

WE
ARE
LIBRARY
PEOPLE®



Slimline / Puzzle



See all functions
and accessories online

WOODEN SHELVING

One is an affordable shelving system with a simple design but fully adapted to the exacting demands of the library.
One combines stability and durability with modern expression.



E76206 + E76207

One

Easy to assemble (fittings included)!
The shelf sections can be assembled using the metal cross on the back which allows sections to be added or removed without the need to dismantle the entire shelving unit. It is easy to re-position or remove shelves without affecting the other shelves.

The shelving system is supplied with a hanging book support for each shelf (not for the bottom shelf). Fittings for assembling two shelves/ sections to serve as a brochure shelf are included.

Material	Melamincoated particle board with birch effect, powdercoated metal, acrylic back edge, book support in chrome metal
Other	Can support up to 80 kg per shelf
Delivered	Flatpacked; needs assembly

Accessories for One

E76215 Hanging book support, 5 pcs.



E76200

E76202



E76204

E76206



E76208

E76210

H1520 mm

Size	Start: W945 x D300/600 (single/double) x H1520 mm Add-on: W923 x D300/600 (single/double) x H1520 mm
Shelves	Single: 5 shelves incl. top shelf Double: 10 shelves incl. top shelf

E76200 single-sided, starter bay
E76201 single-sided, add-on bay
E76202 double-sided, starter bay
E76203 double-sided, add-on bay

H1820 mm

Size	Start: W945 x D300/600 (single/double) x H1820 mm Add-on: W923 x D300/600 (single/double) x H1820 mm
Shelves	Single: 6 shelves incl. top shelf Double: 12 shelves incl. top shelf

E76204 single-sided, starter bay
E76205 single-sided, add-on bay
E76206 double-sided, starter bay
E76207 double-sided, add-on bay

H2120 mm

Size	Start: W945 x D300/600 (single/double) x H2120 mm Add-on: W923 x D300/600 (single/double) x H2120 mm
Shelves	Single: 7 shelves incl. top shelf Double: 14 shelves incl. top shelf

E76208 single-sided, starter bay
E76209 single-sided, add-on bay
E76210 double-sided, starter bay
E76211 double-sided, add-on bay

ACCESSORIES FOR SHELVINGS



Step Two

Reach high places with this easy to move ladder
Practical, user-friendly library ladder on wheels in a smaller format. The design provides an easy grip to hold on to and sturdy support. Makes work easier and safer!

Size	W465 x D550 x H1400 mm
Material	Powdercoated steel, footsteps in solid wood
Castors	Ø125 mm
Design	Tom Stepp for Eurobib Direct
Delivered	Flatpacked; needs assembly

E4049



Wooden Index Block

Index blocks or dividers
Solid index blocks, narrow or wide, for captions or self-adhesive labels.

Size	Narrow: W35 x D135 x H232 mm Wide: W70 x D135 x H232 mm
Material	Painted MDF
Design	Louise Hederström for Eurobib Direct

E3350 narrow, 10 pcs
E3351 wide, 5 pcs

More Index Blocks on p. 100-101.



Twigs

As decorative as it is user-friendly
Book support in a somewhat larger size with decorative, extended leaves that speak clearly: "Here I am, easy to grasp and move!"
The book support can also be used for labelling.

Size	W226 x D110 x H246 mm
Material	Powdercoated steel
Design	Louise Hederström for Eurobib Direct

E3819 right
E3820 left

More Book Supports on p. 95.

Kikalong

Easy to reach, easy to carry stepstool
The castors depress when you step on the floor. Kikalong, and the bumper rests firmly on the floor. Rubber safety treads and bumper protect people and walls.

Size	Ø410 x H400 mm
Material	Baked-enamel finish on metal

E3444 black
E3445 off white



Everything you need for the bookshelf

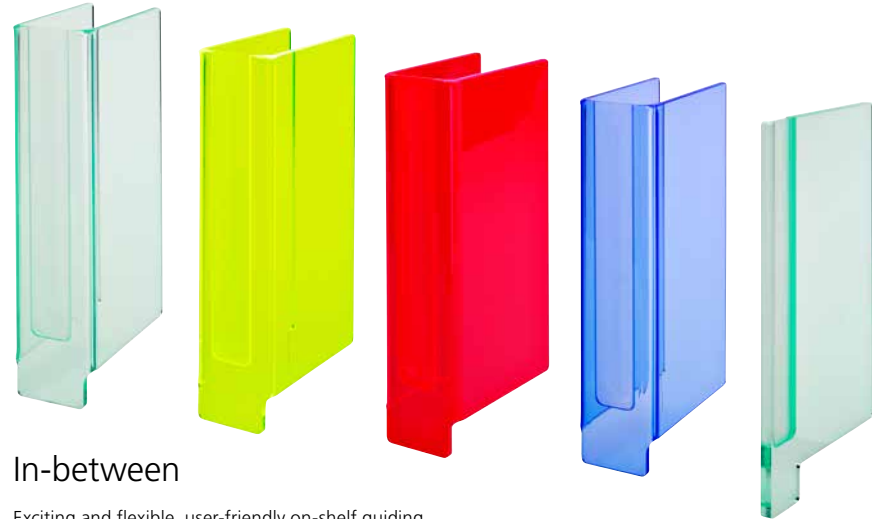
Do you need some help in reaching the top shelf, using the end panels more effectively, or getting visitors to find what they are looking for in the bookshelves? We are happy to give you advice!

See all products at
[wearelibrarypeople.com/
bookshelf](http://wearelibrarypeople.com/bookshelf)



ACRYLIC INDEX BLOCKS

If you are looking for that little something extra for your bookshelves.

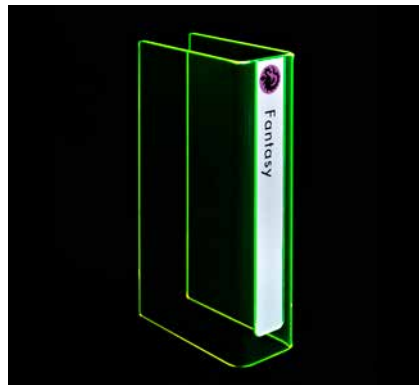


In-between

Exciting and flexible, user-friendly on-shelf guiding manufactured in a high quality glass look or fluorescent neon acrylic. Includes integrated label holder.

Size	W63 x D129 x H239 mm + 25 mm stopper
Material	Acrylic, PMMA
Thickness	6 mm
Design	Franz James for Eurobib Direct

E3317	glass look
E3318	fluorescent lime
E3319	fluorescent red
E3320	fluorescent blue



If you require alternative colours, please contact us.

Accessories for In-Between

E3208	Block label, A-Z
E3206	Block label, blank
E2269	Block label, Lion
E2278	Symbol sticker, fantasy
E2287	Symbol sticker, thriller
E2288	Symbol sticker, spooky

In-between, slim

Universal with stopper
Includes integrated label holder.

Size	W8 x D129 x H239 mm + 25 mm stopper
Material	Acrylic, PMMA
Thickness	8 mm
Design	Franz James for Eurobib Direct

E3321	glass look
-------	------------



We have more stickers available online...

PLASTIC INDEX BLOCK



modular



Index Block

The flexible shelf marker
Versatile and flexible shelf marker, made from environmentally-friendly plastic.

Size	W36 x D125 x H222 mm
Material	Plastic, PP

Index Block with Base Plate

E3282	light grey
E3300	graphite grey
E3293	red

Index Block with Stopper

E3281	light grey
E3275	graphite grey
E3291	red

Index Block with Shelf Clip

E3272	light grey
E3273	graphite grey
E3274	red



Index Block with Support Plate

E3283	light grey
E3271	graphite grey
E3290	red

2-sided label protector

Foldable label protector; readable from both directions.

Size	H217 mm
Material	Plastic, PVC

E3294	
-------	--

Universal

Make visible from two directions
Smart block that doesn't need much space.

Capacity	2 block labels
Size	W3 x H210 mm
Material	Plastic, PP
Unit	10 pcs

E3237	light grey
E3229	graphite grey

Double Index Block

Extra clear
Double-width index block in environmentally-friendly plastic. The block is made up of 5 parts – 2 outer sides, 1 partition, and 2 bottom panels.

Size	W73 x D125 x H222 mm
Material	Plastic, PP

E3284	light grey
E3301	graphite grey
E3263	red



Block Label and Label Protector

Size	W31 x H217 mm
Material	Paper

E3208	A-Z, 30 pcs
E3210	blank, red/white, 100 pcs
E3206	blank, white, 100 pcs

Size	W32 x H217 mm
Material	Plastic, PVC

E3203	Label protector, 25 pcs
-------	-------------------------

Double Block Label and Label Protector

Size	W69 x H217 mm
Material	Paper

E3216	A-Z, 30 pcs
E3246	blank, red/white, 25 pcs

Size	W70 x H217 mm
Material	Plastic, PVC

E3247	Label protector, 25 pcs
-------	-------------------------



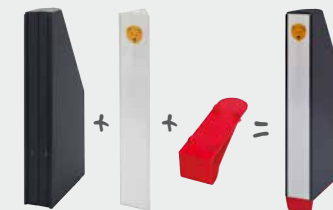
Franz James, our own "interior design specialist" for the past several years. Designer of some of our most popular collections. You haven't missed them, have you?

Meet the designer
wearelibrarypeople.com/
franzjames



Mix & Match

The index blocks consist of three parts: two sides and one base. Due to the options available, this means you can shape your index blocks in different colours and sizes depending on your needs. Find all modular parts in the webshop.



More information on
wearelibrarypeople.com
indexblocks





Look me up - Additional colour



E5809



E34410

FILL UP THE SHELVES!

Here you will find a selection of exciting display solutions. Solutions that can not only make your shelving system more efficient, but also give the shelves a whole new look. Even more solutions can be found in the beginning of the catalogue.



Look Me Up!

Exclusive magazine boxes

Acrylic magazine boxes for displaying and storing magazines. The fold-down lid also serves as a display holder for the latest issues. Can be placed on a shelf or mounted on a wall.

Size	Look me up 250: W270 x D250 (excl. folddown lid) x H395 mm Look me up 300: W325 x D300 (excl. folddown lid) x H395 mm
Material	Acrylic, PMMA
Other	Keyhole attachment on rear of box
Design	Eurobib Direct



E50344

E50339

E50338

Additional colours?
Ask us, we will be happy to advise you!

Querbox©

Magazine box compartment for shelves, depth up to 250 mm. Displays magazines with cover page facing the visitor. The displayed magazine is kept in place by a transparent sheet over the flap.

Size	W320 x D260 x H320 mm
Material	Powdercoated steel
Unit	2 pcs
Design	Schulz Speyer

- E5794 aluminium grey
- E5800 basalt grey
- E5807 light grey
- E5808 anthracite grey
- E5809 traffic white

Look me up 250

- E50338 frosted white
- E50339 green
- E50340 petroleum blue

Look me up 300

- E50342 frostvit
- E50343 green
- E50344 petroleum blue



E34411



Shelf Stand

Clever stand with six compartments in sturdy, transparent acrylic for faceforward display of books and other media. Combines storage and display. Works with most shelving systems.

Capacity	12-18 standard books
Size	W895 x D145 x H190 mm
Material	Acrylic, PMMA
Unit	4 pcs
Design	Niklas Dahlman for Eurobib Direct

6720

Media Cube Display

Exciting eye-catcher
Highlights a single title. Ideal for desks, tables and display windows. Can also be used on-shelf as it supports the books on either side.

Size	W320 x D160 x H320 mm Display depth: 47 mm
Material	Acrylic, PMMA

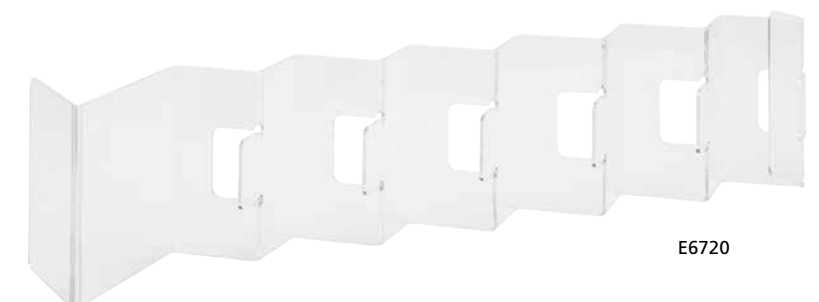
E6703

Acrylic magazine displayer

Smart displayer for magazines to be placed on flat surfaces, such as shelves, tabletops or countertops.

Size	12-compartment: W884 x D120 x H204 mm 9-compartment: W707 x D120 x H204 mm
Material	Acrylic, PMMA

- E34410 12-compartment
- E34411 9-compartment



E6720

SHELF MARKING

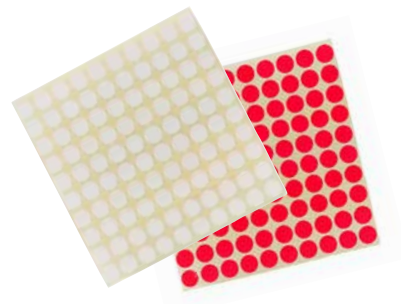


Rectangular Colour Markers

Self-adhesive punched colour markers on sheets.

Size	W35 x H22 mm
Material	Vinyl
Unit	200 pcs (10 sheets)

- E3181 light green
- E3185 red
- E3186 green
- E3187 blue
- E3188 yellow
- E3189 brown
- E3190 purple
- E3191 grey
- E3192 beige
- E3193 orange
- E3194 white
- E3195 black
- E3196 all colours (12x200 pcs)



Circular Colour Markers

Self-adhesive punched colour markers on sheets.

Size	Ø13 mm
Material	Vinyl
Unit	100 pcs (1 sheet)

- E2999 orange
- E3103 black
- E3104 white
- E3155 red
- E3106 green
- E3107 blue
- E3108 yellow



Shelf Sign

Universal, detachable shelf sign.

Size	W150 x D150 x H26 mm
Material	Powdercoated steel
Unit	10 pcs
Design	Schulz Speyer

E5799



Self-adhesive Label Strip

Blank paper label supplied.

Size	W860 x H19 mm
Material	Plastic, PET
Unit	10 pcs

E3310



E2034

Marker Pens

Alcohol-based permanent marker pens.

- E2034 set, 4 pcs
- E2760 black, 1 mm tip



Labels by the roll

Labelling book spines and other media.

Size	W24 x H12 mm
Material	Paper with matt surface
Unit	1000 pcs

E82050



Label Maker & Marking Tape

Print labels or marking tapes
See all specifications in the webshop.

- E3347 LM PNP
- E3349 LM 500TS
- E3343 Marking tape, white
- E3344 Marking tape, transp.



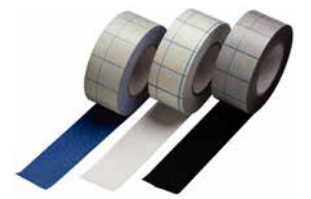
Everything you need marking!

Good advice doesn't have to be expensive (or even particularly off the beaten path). Visit our webshop today. Here, you will find a wealth of goodies that make it easier for your visitors to find just the right book.

More information at wearelibrarypeople.com/markings



BOOK CARE



WAY TO HELP YOUR BOOKS LAST LONGER!

You can practically take these pages right to the bank. With simple means and relatively modest efforts, you can radically extend the life of your books. Here you will find a wide range of our popular book films, tools and other items you can use.



Your toolbox

If you want to protect and preserve books, the following pages present a complete "toolbox" with everything you need to achieve the best results. Check out our webshop today. There you will find everything from burnishing bones, book squeegees and practical cutting underlays to book glue and much more. Good luck!

Book care tools on wearelibrarypeople.com



BOOK FOIL

Reinforce and protect covers and labels!
Here you will find our most popular book films for both novice and experienced users.



Filmolux Soft

Top quality film

Can be used on almost all surfaces. Glossy or matt plastic film; Easy to reposition. Recommended for people without experience in book care.

Material	Plastic, PVC
Thickness	70 µm
Unit	Roll, 25 m
Reposition	Yes

E3005	220 mm, glossy
E660064	240 mm, glossy
E3009	260 mm, glossy
E660066	280 mm, glossy
E3013	300 mm, glossy
E660067	320 mm, glossy
E660068	340 mm, glossy
E660069	360 mm, glossy
E3021	380 mm, glossy
E660070	410 mm, glossy
E3022	450 mm, glossy

E3085	220 mm, matt
E3089	260 mm, matt
E3093	300 mm, matt
E3094	380 mm, matt

Protection Tape, roll, 25 m

E3000	20 mm, glossy
E3003	30 mm, glossy
E3004	50 mm, glossy



Filmolux

Popular film

Similar to Filmolux Soft but only repositionable to a limited extent. Recommended for people with some experience in book care.

Material	Plastic, PVC
Thickness	70 µm
Unit	Roll, 25 m
Reposition	Limited

E3028	260 mm, glossy
E660037	280 mm, glossy
E3029	300 mm, glossy
E660039	320 mm, glossy
E660040	340 mm, glossy
E660041	360 mm, glossy
E660042	410 mm, glossy
E660238	500 mm, glossy



Filmolux 609

Instant adhesion

Strengthening binder covers and label protection. Ideal for brochures, folders, maps, etc. Recommended for experienced users.

Material	Plastic, PVC
Thickness	70 µm
Unit	Roll, 25 m
Reposition	No

E660051	220 mm, glossy
E660052	240 mm, glossy
E660053	260 mm, glossy
E660054	280 mm, glossy
E660055	300 mm, glossy
E660056	320 mm, glossy
E660057	340 mm, glossy
E660058	360 mm, glossy
E660059	410 mm, glossy
E660060	500 mm, glossy
E660061	620 mm, glossy

Protection Tape, roll, 50 m

E660045	20 mm, glossy
E660046	30 mm, glossy
E660047	40 mm, glossy
E660048	60 mm, glossy
E660049	100 mm, glossy

Buy several and get a volume discount!
From 5 rolls 5%
From 10 rolls 7%
From 20 rolls 9%
From 50 rolls 12%





Phthalate-free



ECO-friendly

Pello

Popular Economy film and tape

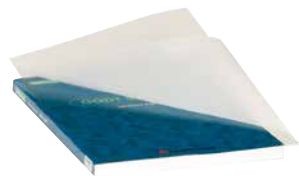
Self-adhesive, highly transparent, glossy or matt plastic film; medium hard. Repositionable (to a limited extent). For experienced users.

Material	Plastic, PVC (phthalate-free)
Thickness	90-100 µm
Unit	Roll, 25 m
Reposition	Limited

E3035	240 mm, glossy
E3038	260 mm, glossy
E3039	300 mm, glossy
E3040	360 mm, glossy
E3041	450 mm, glossy
E3036	240 mm, matt
E3045	260 mm, matt
E3046	300 mm, matt
E3047	360 mm, matt
E3048	450 mm, matt

Protection Tape, roll, 25 m

E3037	30 mm, glossy
E3042	50 mm, glossy
E3043	70 mm, glossy
E3049	30 mm, matt
E3050	50 mm, matt
E3044	70 mm, matt



Rigid Plastic

Protect booklets, folders

Self-adhesive, rigid, transparent and glossy plastic film. Ideal for strengthening smaller booklets, folders, etc.

Material	Plastic, PVC
Thickness	250 µm
Unit	Sheet, 100 pcs

E82120	220 x 330 mm
--------	--------------

Environmental Film

Gentle film for the environment

Plastic film manufactured in environmentally friendly, heat-resistant plastic. High initial adhesion; repositionable to a limited extent. For experienced users. Can be safely used on barcodes and other printed text.

Material	Plastic, PP
Thickness	80-90 µm
Unit	Roll, 25 m
Reposition	Limited

E3020	220 mm, glossy
E3033	260 mm, glossy
E3032	300 mm, glossy
E3034	360 mm, glossy



Scotch Book Tape

Versatile, durable

Self-adhesive, transparent tape. Strong and tear-resistant. For strengthening, protecting and repairing books, paperbacks, magazines etc.

Material	Plastic
Thickness	90 µm
Unit	Roll, 13.7 m

E3112	38 mm
E3113	50 mm

Plastic properties & environmental impact

Polyvinyl Chloride, PVC

Colourless vinyl chloride polymer. The plastic is usually mixed with free additives such as softeners, fillers and lubricants, as well as stabilizers.

In general, the plastic has good resistance to chemicals but also a low softening point.

Environmental impact

Not classified as a hazardous to health and believed to be physiological inert. However, hydrogen chloride is released during incineration.

Polypropen, PP

White to colourless plastic (without additives), similar to polyethylene but more rigid. High fatigue resistance, low density, good electrical properties, good resistance to chemicals and good mechanical properties.

However, can be attacked by strong acids and bases, aromatic and chlorinated hydrocarbons and methanol.

Environmental impact

The plastic is not classified as hazardous to health. No special purification devices required during incineration.

Good to know!

Best before date?

Of course plastic film doesn't come with a best before date. But the glue on self-adhesive film can age. For optimal adhesion, we recommend that the product be used within two years. This applies to unused foil on the roll.

Glossy or matt?

Glossy plastic film strengthens the colours on a book cover and is often used to protect photographs. Matt film does not reflect light in the same way as gloss. Barcode labels protected by gloss film can be a little difficult to read.

Easy to reposition!

Are you a beginner or maybe nervous about making a mistake? Repositionable plastic film can be placed, removed and repositioned multiple times without tearing or sticking. After 24 hours, the glue will have stabilized and the film is then firmly adhered to the cover. Other plastic film we market as repositionable to a limited extent has a more instant adhesion and must be repositioned immediately.

¥€\$!



BOOK FILM IS A GREAT WAY TO SAVE MONEY

It is the easiest solution for preserving and extending the life of popular books. You not only prevent wear to books and save money, but you also make it possible to use the library's funding to buy new titles instead of replacing old ones.

We have practically everything you need to protect and preserve books. Book film that can be used by pre-school teachers to repair picture books, and by larger organisations to deliver fully-prepared books to the library. Keep in mind that even fully-prepared books may need some care,

for example to reinforce and repair folds in the cover, repair tears, or reattach pages that have been ripped out (just to name a few). Help is close at hand. We can give you advice that will help you save money!



For advice see our BOOK CARE GUIDE on wearelibrarypeople.com

More about book care on wearelibrarypeople.com





Filmoplast P

For high demands
Paper tapes for the repair and maintenance of books and picture framing. The tapes are state-of-the-art for the conservation of paper fiber and also meet the high requirements of museums and archives.

Paper	Filmoplast P: 20 g/m ² Filmoplast P90: 50 g/m ² Filmoplast P90 Plus: 50 g/m ²
Unit	Roll, 50 m
Reposition	No

E3111	Filmoplast P, 20 mm
E3139	Filmoplast P, 40 mm
E3141	Filmoplast P90
E3006	Filmoplast P90 Plus



Filmoplast SH

Strong fabric for cover folds
Textile fabric, white acid-free, highly tear-resistant, environmentally-friendly, biologically degradable.

Material	Acid-free textile fabric
Thickness	170 µm
Unit	Roll, 25 m
Reposition	No

E3109	20 mm
E3110	30 mm



E3109 / E3110



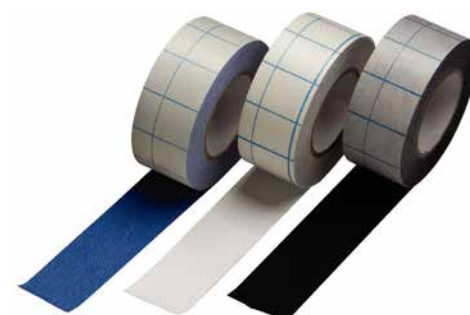
Cloth Tape, vinyl-coated

Self-adhesive coarse cloth tape for major strengthening/repairing of book spines and covers. Very strong. Can be written on.

Material	Plastic-coated cloth, PVC
Thickness	240 µm
Unit	Roll, 25 m
Reposition	No

E3122	20 mm, white
E3130	40 mm, white
E3129	40 mm, black
E3128	40 mm, red
E3123	40 mm, blue
E3126	40 mm, green
E3125	40 mm, grey

E3138	60 mm, white
E3137	60 mm, black
E3136	60 mm, red
E3131	60 mm, blue
E3134	60 mm, green
E3133	50 mm, grey



Filmoplast T

Durable repairs
Self-adhesive tissue tape for repairing stitched book block spines (back lining), laminating book covers or complete book. Used to strengthen the first and last sheet in the fold when hand stitching. Reverse-side strengthening of maps and plans, or dust-free sealing in the sector of picture framing.

Material	Acid-free rayon staple tissue tape
Thickness	240 µm
Unit	Roll, 10 m
Reposition	No

E660083	30 mm, white
E660084	30 mm, black
E660086	30 mm, blue
E660089	30 mm, grå

E3121	50 mm, white
E660092	50 mm, black
E3116	50 mm, blue
E3118	50 mm, grey



E3141

Easy Wings

Give books wings
Self-adhesive book spine strengtheners with patented center perforations for easy positioning. The perfect aid for strengthening book spines and corners.

Material	Plastic, PVC
Thickness	60 µm
Unit	25 pcs
Reposition	No

E3091	57 mm
E3092	87 mm



E3091 / E3092

POCKETS & COVERS

Good advice doesn't have to be expensive or even particularly complicated! Here you will find a selection of accessories for adding inserts to books or protecting books and labels.



Filmolux Card Pockets

Practical card pockets
Self-adhesive, transparent and triangular pockets. Available in three sizes.

Material	Plastic, PVC
Unit	S: 144 pcs M/L: 100 pcs

E660152	S: 75 x 75 mm
E2856	M: 100 x 100 mm
E2851	L: 140 x 140 mm



Book Pockets

Unfolded pocket, 500 pcs
Supplied on a roll for printing.

E2320	W90 x H60 mm
-------	--------------

Book pocket, deep, 500 pcs
Pre-folded for gluing. Not self-adhesive.

E2371	W90 x H135 mm
-------	---------------

Self-Adhesive Book Pocket, 100 pcs
Credit card size - for library cards, insert, etc.

E2322	W90 x H57 mm
-------	--------------



Paperback Covers

Use over and over again
Offers quick, simple protection from wear & tear and dirt. As the covers are self-adhesive and also adjustable width-wise, they can be used over and over again. The welded seams help prolong service life.

Material	Plastic, PVC
Thickness	180/140 µm
Unit	100 pcs

E3154	180 x 265 mm
E3156	198 x 310 mm
E3157	200 x 310 mm
E3160	202 x 310 mm
E3161	204 x 310 mm
E3155	300 x 500 mm



Label Protection

Self-adhesive, transparent, glossy plastic film; soft. Can be safely used on barcodes and other printed text. Manufactured in environmentally friendly, heat-resistant plastic.

Material	Plastic, PP
Thickness	55 µm
Unit	1000 pcs

E3096	35 x 25 mm
E3086	65 x 53 mm
E3099	75 x 35 mm
E3087	100 x 40 mm
E3090	113 x 48 mm



Binder Covers

Self-adhesive covers for paperbacks
Transparent, pre-cut binder covers in strong plastic; flexible back and stiffer cover. Choose the one that suits you best, remembering to allow for a few extra millimeters more than the size of the object you are covering.

Material	Plastic, PVC
Thickness	Front: 140 µm / back: 45 µm
Unit	AI, AII, BI, BII, CI, CII: 10 pcs EI, EII: 5 pcs

W270 x H186 mm, pocket books

E3051	AI, spine 1-21 mm
E3052	AII, spine 22-42 mm

W350 x H222 mm, standard books

E3055	CI, spine 1-21 mm
E3056	CII, spine 22-42 mm

W410 x H252 mm, magazines

E3053	DI, spine 1-21 mm
E3054	DII, spine 22-42 mm

W510 x H320 mm, larger books

E3057	EI, spine 1-21 mm
E3058	EII, spine 22-42 mm

Find more pockets and covers on wearelibrarypeople.com



SALES AND DELIVERY TERMS

The Eurobib range is sold through our webshops in Sweden, Norway, Denmark, UK, Belgium, France and Germany.
In case there is no webshop in your country you can contact your local dealer or our export team.



Find your local dealer on
www.wearelibrarypeople.com/dealer

or contact our export team by email
export@wearelibrarypeople.com

Lammhults
Biblioteksdesign A/S
Dalbækvej 1
DK-6670 Holsted
Tel: +45 76 78 26 11
Fax: +45 76 78 26 22

SCHULZ SPEYER
Bibliothekstechnik AG
Friedrich-Ebert-Straße 2a
D-67346 Speyer
Postfach 1780, D-67327 Speyer
Tel.: +49 (0) 62 32-31 81-0
Fax: +49 (0) 62 32-31 81-800

Lammhults
Biblioteksdesign AB
Odlarevägen 16, Box 150
SE-221 00 Lund
Tel: +46 46 31 18 00
Fax: +46 46 32 05 29

Eurobib
direct

ALPHABETIC PRODUCT INDEX

A

Acrylic stand	9
Armchair	74
Audio chair	74
AV-browser	48

B

Basket	81
Bean bag	34, 74
Binder cover	11
Binder trolley	56, 59
Blank label	104
Block label	100-101
Book box	38
Book browser	40-42, 44-45, 47, 50
Book care	106-111
Book covering plastic	107-108
Book cradle	11
Book film	108
Book foil	107-108
Book glue	106
Book pocket	111
Book repair	106-111
Book return cabinet	62
Book squeegee	106
Book support	95
Book tape	108
Book tower	22-23, 24-25, 28, 30
Book trolley	52-61
Brochure stand	11
Browser	40-50
Burnishing bone	106

C

Card pocket	111
Carrier bag	81
Castor set	44, 45, 50, 62
CD pocket	48
CD sleeve	48
CD/DVD browser	50
CD/DVD cabinet	50
CD/DVD marker pen	94, 104
CD/DVD storage	48-49
Children chair	73, 74
Children's furniture	40-47, 50, 64-77
Children's stool	68
Children's table	68, 73
Coat hanger	6, 41, 72
Coat stand	41, 72
Colour marker	104
Comic book browser	40-47, 50
Counter	82-85
Cover for books/paperbacks	111
Cover for magazines	111
CPU console	86
Cushion	69, 74
Cushion trolley	74

D

Desktop unit	18
Digital optical counter	81
Display box	11
Display cube	103
Display holder	12, 13, 45, 78
Display rail	13, 15
Display screen	30
Display shelf	17
Display stand	5-9, 11, 20
Display system	15
Display tower	23, 28, 30, 35
Display trolley	59
Display unit	23, 25, 27
Dress-up trolley	67

E

Easel	67
End panel display	14, 16, 19
Exhibition stand	5-9, 11, 20
Exhibition tower	23, 28, 30, 35

G

Gaming wall	78
-------------	----

H

Hanging book support	98
----------------------	----

I

Index block	99-101
Index tabs	48
Info pod	82-85
Information holder	18

K

Kick step	99
-----------	----

L

Label	94, 100-101, 104
Label maker	94, 104
Label protection	101, 107, 111
Label strip	94, 104
Ladder	99
Laptop table	88
Learning environment	64-69
Letter sheet	47
Literature stand	30

M

Magazine box	103
Magazine cover	34, 111
Magazine display	12, 30, 34, 35, 103
Magazine holder	35
Magazine stick	34
Magazine storage	34, 35
Magazine tower	30, 34, 35
Magnetic frame	16, 18, 30, 94
Magnetic label strip	94
Magnets	30, 64, 94
Marker pen	94, 104
Marking tape	94, 104
Media tower	28-30, 35
Music chair	74

N

Newspaper stick	34
Non-skid tape	95

O

Optical counter	81
-----------------	----

P

Paperback cover	111
Pen (black/whiteboard)	64
Pen (permanent)	94, 104
Periodical collector	35, 37
Periodical holder	35
Periodical storage	35
Picture book browser	40-47, 50
Pocket	111
Podium	31-33
Presentation screen	30
Presentation stand	6-11
Protection tape	107-108
Protective bag	38

R

Rack	34
Return cabinet	62
Return trolley	52-62
Room in a room	64, 69-71

S

Search station	25, 86
Seasonal products	20
Shelf sign	104
Shelf stand	103
Shelving system	91-93, 96-98
Shipping box	38
Sign holder	11, 16, 18, 47
Sign stand	18
Sinage	18, 19, 104
Sitting bag	34, 74
Sound absorption	88
Sound chair	74
Stage	67
Stick rack	34
Stickers	18, 19
Stool	31, 41, 68, 77
Storage box	37, 38, 67
Storage furniture	28, 35, 42-50, 90-92
Study table	26
Symbol sign	18-19
Symbol sticker	18-19, 100

T

Table	26, 31, 88
Table sign holder	18
Tablet holder	88
Tape	94, 95, 104, 107, 108, 110
Tape repair	110

W

Wall display	5, 12-17, 20, 35
Whiteboard	30
Workstation	82-85

Didn't find what
you were looking for?

Visit www.wearelibrarypeople.com
or contact customer service at
export@wearelibrarypeople.com
We are here to help you.



WE ARE LIBRARY PEOPLE®

wearelibrarypeople.com

Modern library solutions

We aim to offer complete solutions for libraries and public meeting places. We offer an almost complete range for libraries and other learning environments. Discover our website packed with inspiring solutions, as well as our webshop featuring almost everything your library might need. Simple, quick and open 24 hours a day on a computer near you.

We are part of Lammhults Design Group, renowned throughout the world for furniture and interior design. Through our strong network, we can offer complete solutions for creative, attractive and functional interiors.



Lammhults Biblioteksdesign A/S
Dalbækvej 1
DK-6670 Holsted

Tel: +45 76 78 26 11
Fax: +45 76 78 26 22
www.wearelibrarypeople.com
E-mail: bci@bci.dk

SCHULZ
SPERBERG



BCI

Eurobib
direct